

## CENTRO

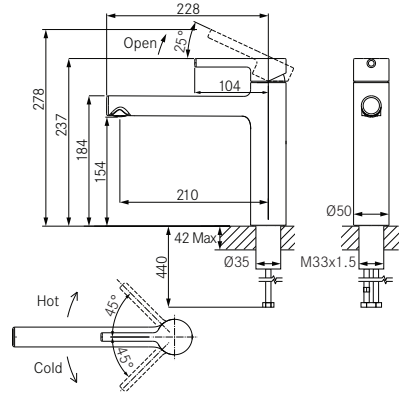
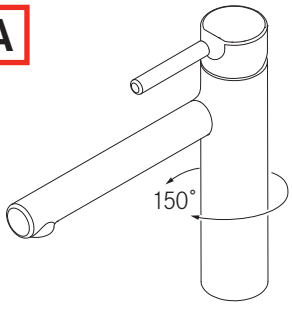
HU Szerelési és szerviz útmutató

Mosogató csaptelep

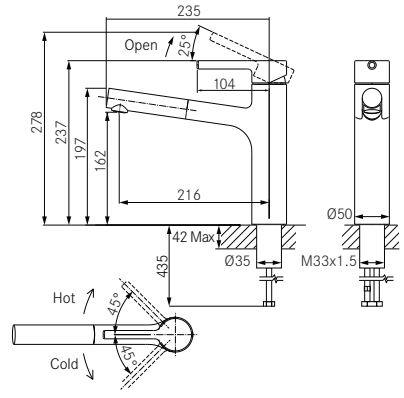
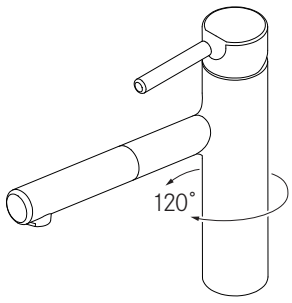




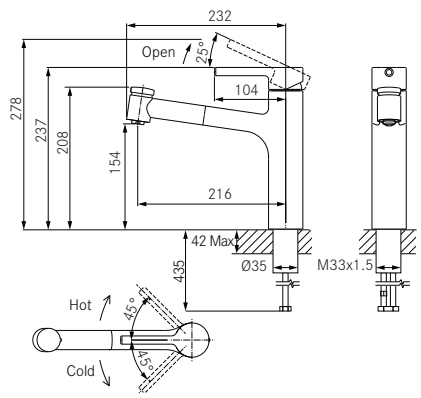
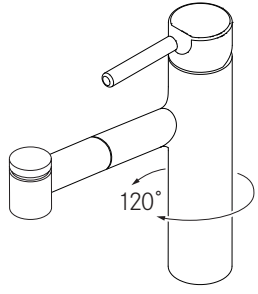
Tap Centro Swivel Spout Top Lever HP



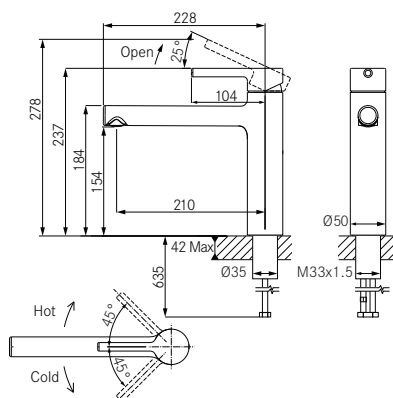
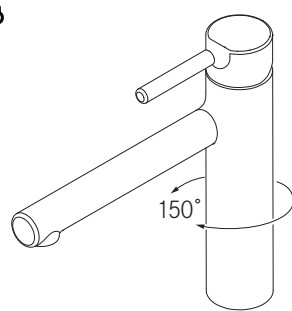
Tap Centro Pull out Nozzle Top Lever HP



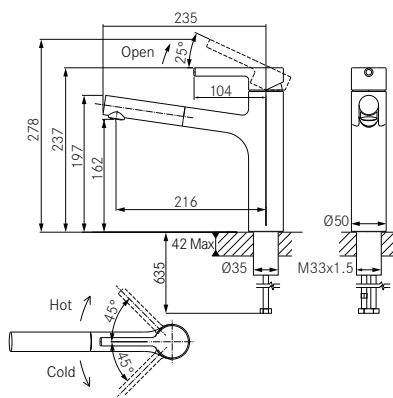
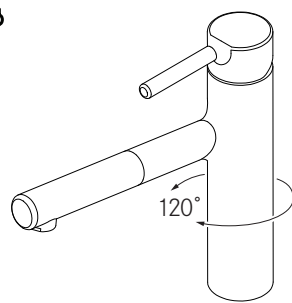
Tap Centro Spray Double Jet Top Lever HP



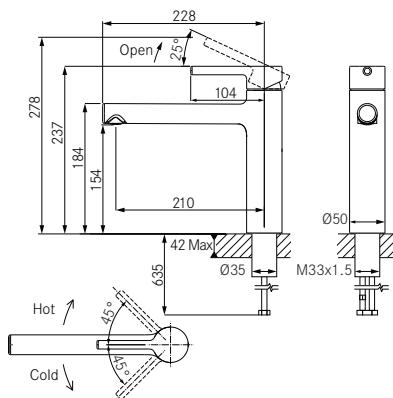
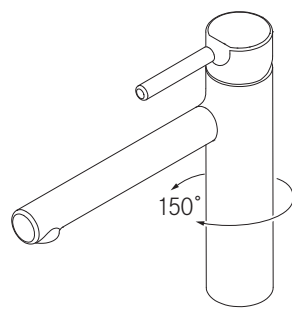
**D** Tap Centro Swivel Top Lever Window Side HP



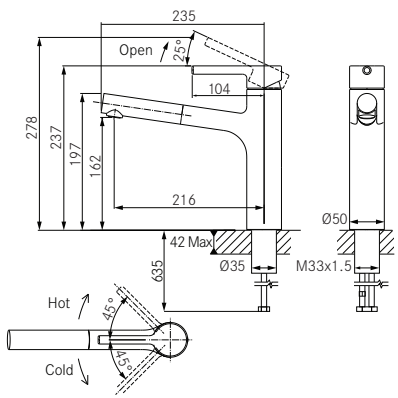
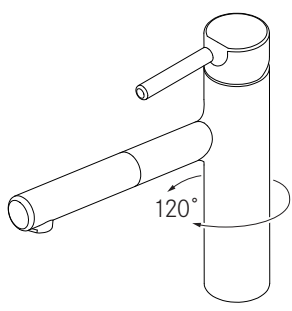
**E** Tap Centro Pull out Nozzle Top Lever Window Side HP



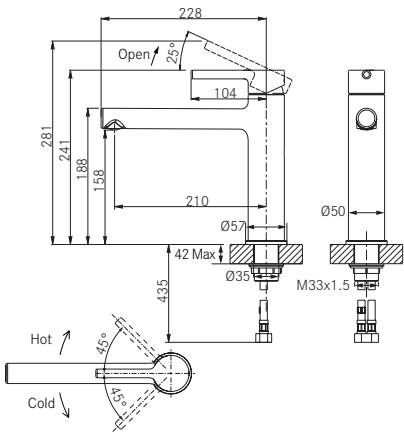
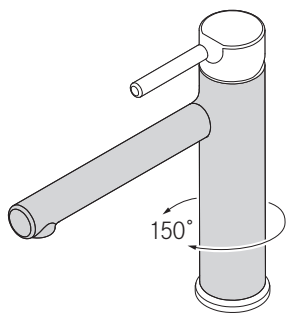
**F** Tap Centro Swivel Top Lever Side LP



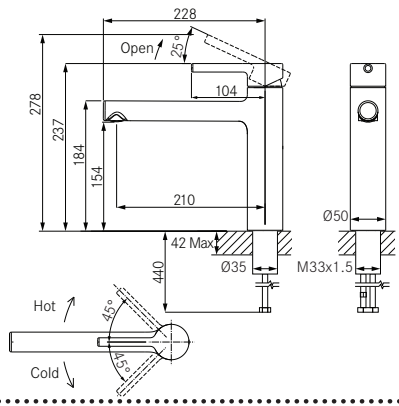
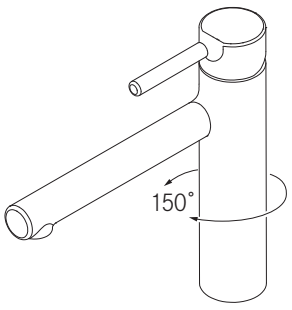
**G** Tap Centro Pull out Nozzle Top Lever Side LP



**H** Tap Centro Swivel Top HP Bi-decor

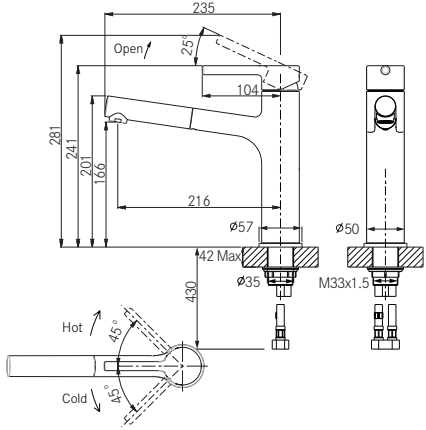
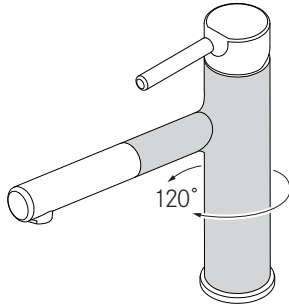


**I** Tap Centro Swivel Top HP Decor Steel

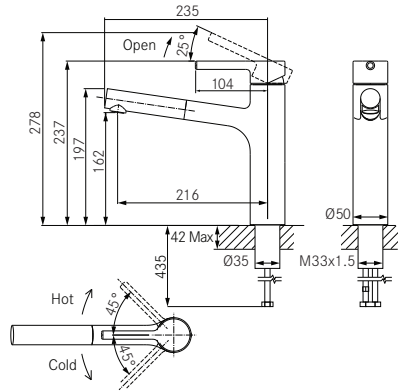
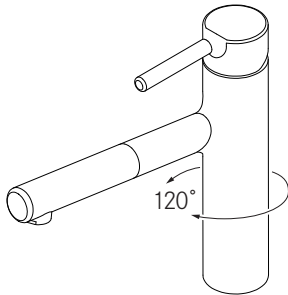


**J**

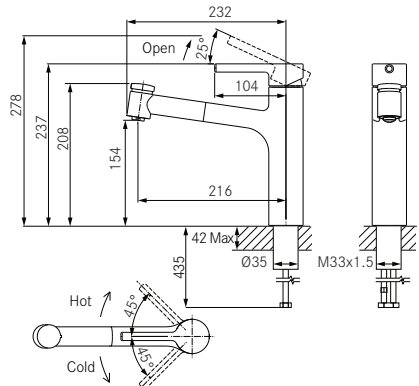
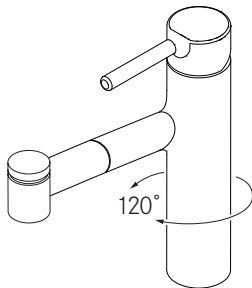
Tap Centro Pull out Nozzle Top HP  
Bi-decor

**K**

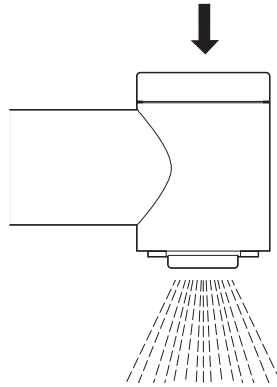
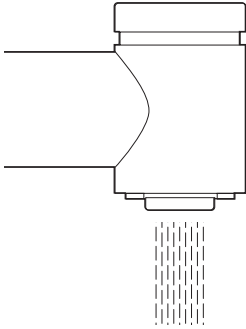
Tap Centro Pull out Nozzle Top HP  
Decor Steel

**L**

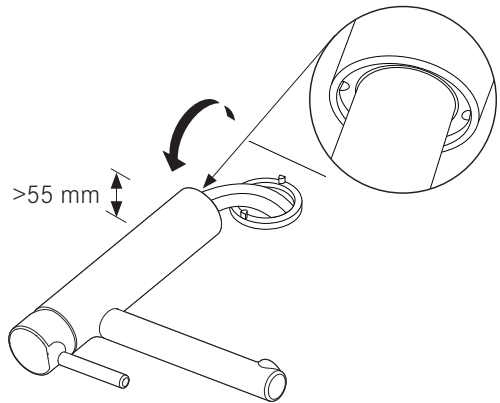
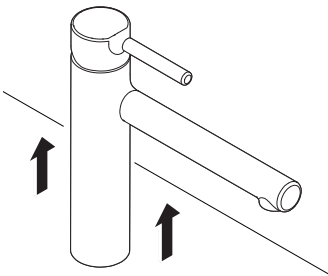
Tap Centro Spray Double Jet Top HP  
Decor-Steel



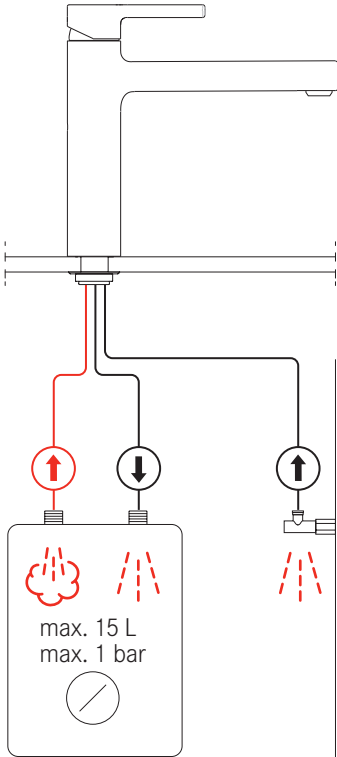
**i** **C** **L**



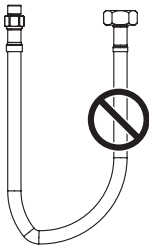
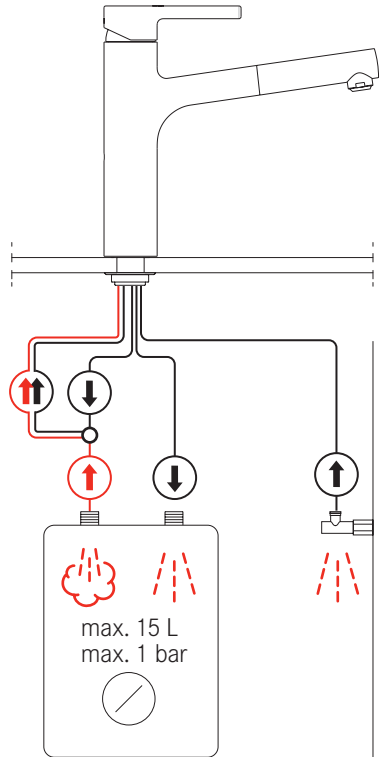
**i** **D** **E**



**i** **F** **H** **I**



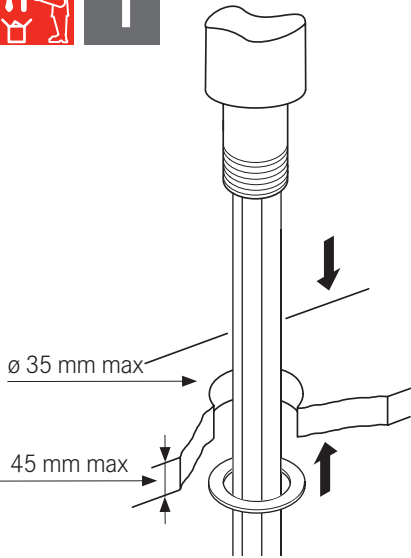
**i** **G** **J** **K**



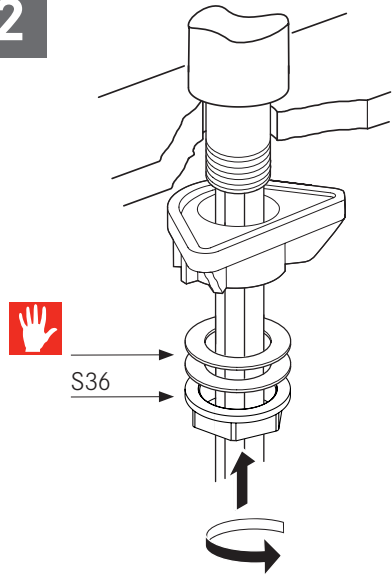




1

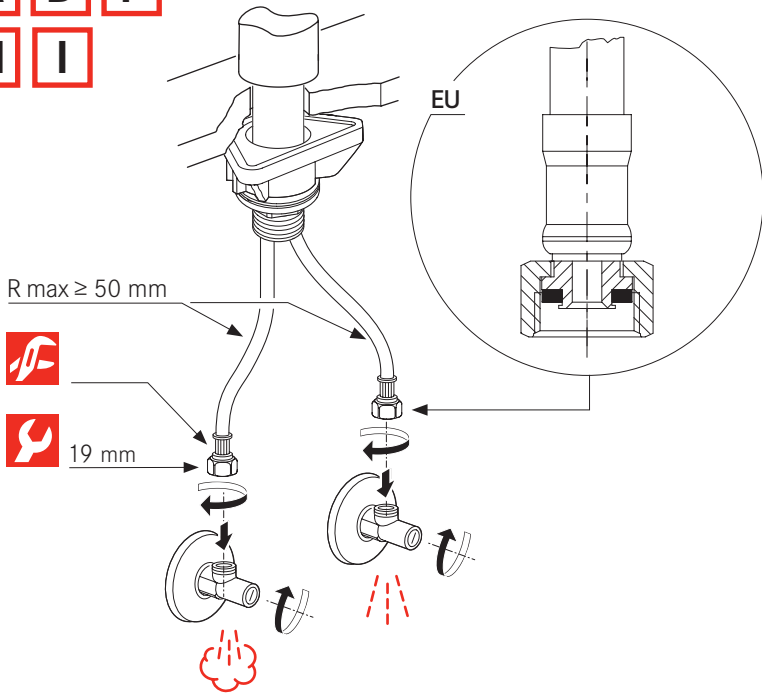


2



3

A D F  
H I



3

B

C

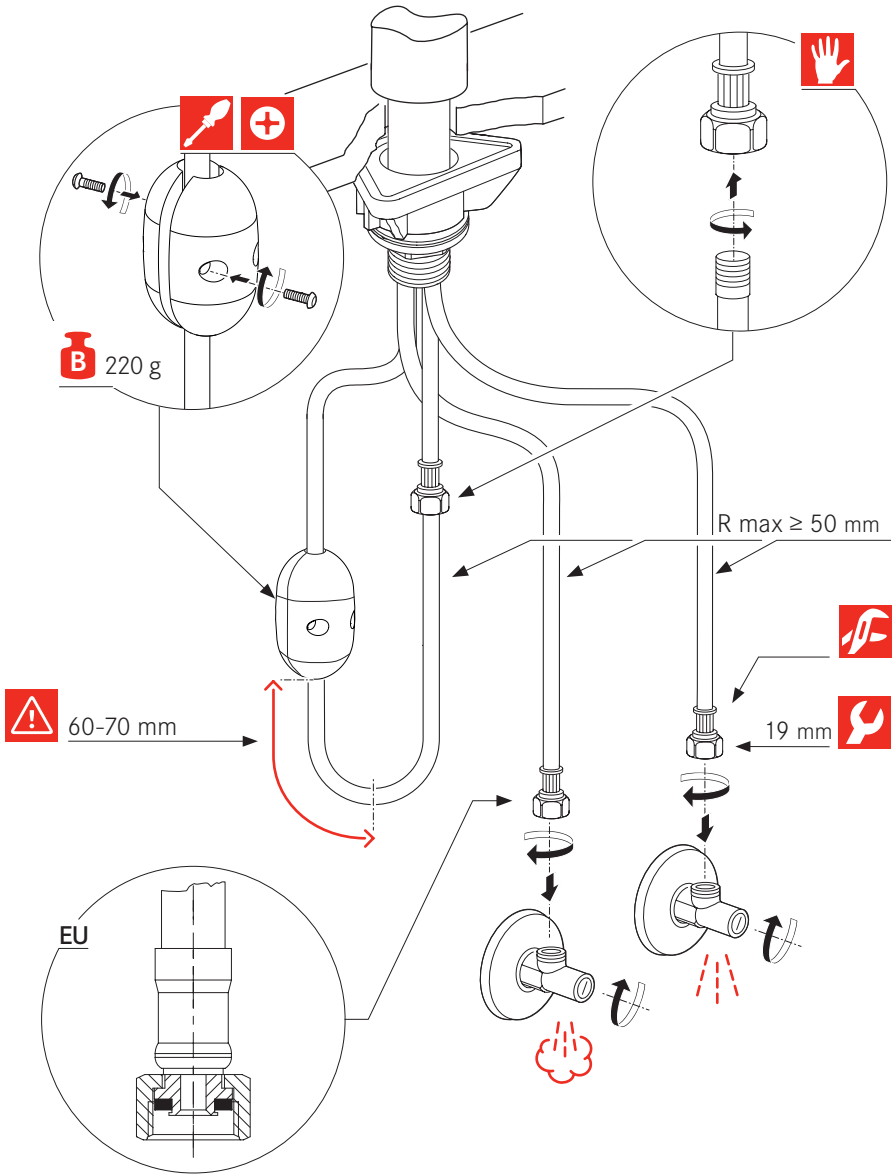
E

G

J

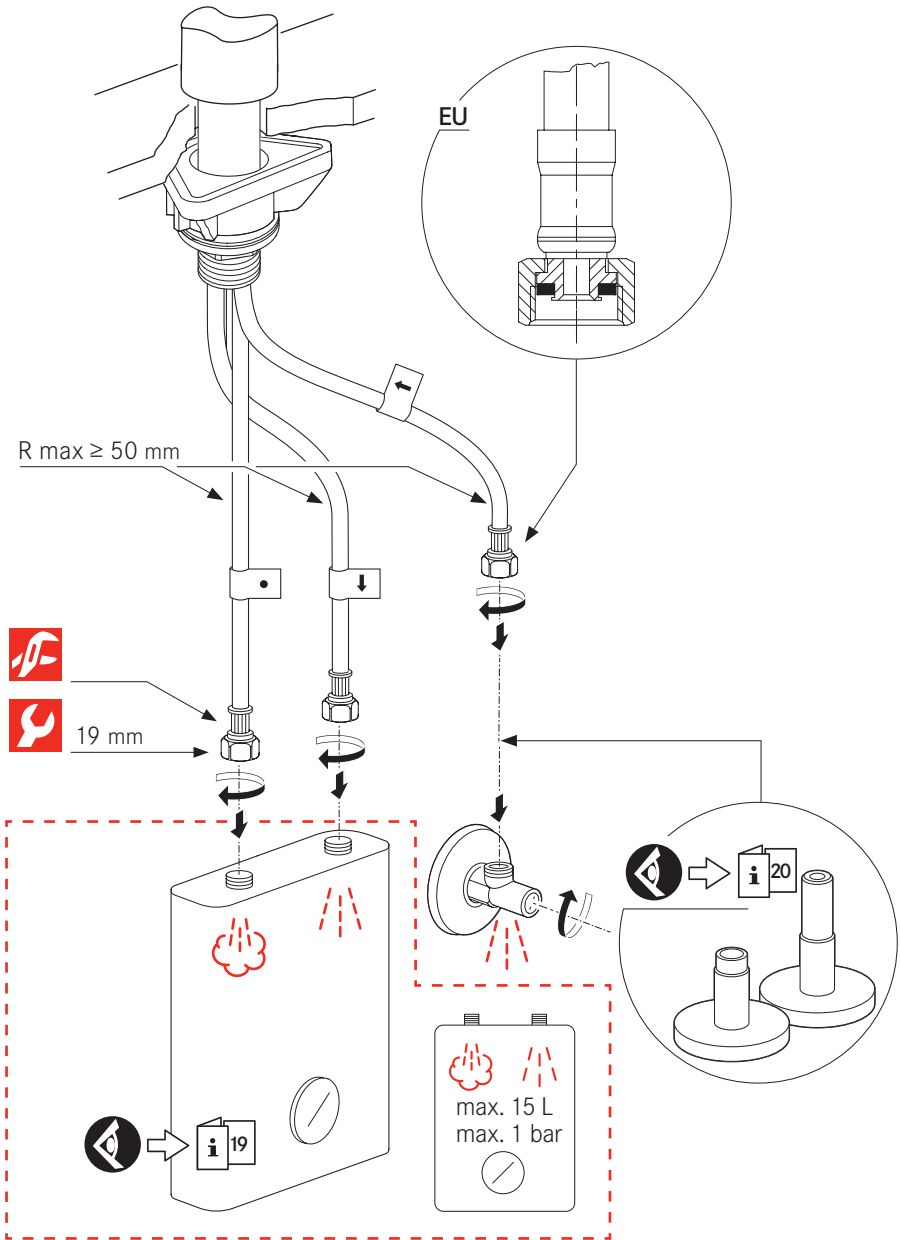
K

L



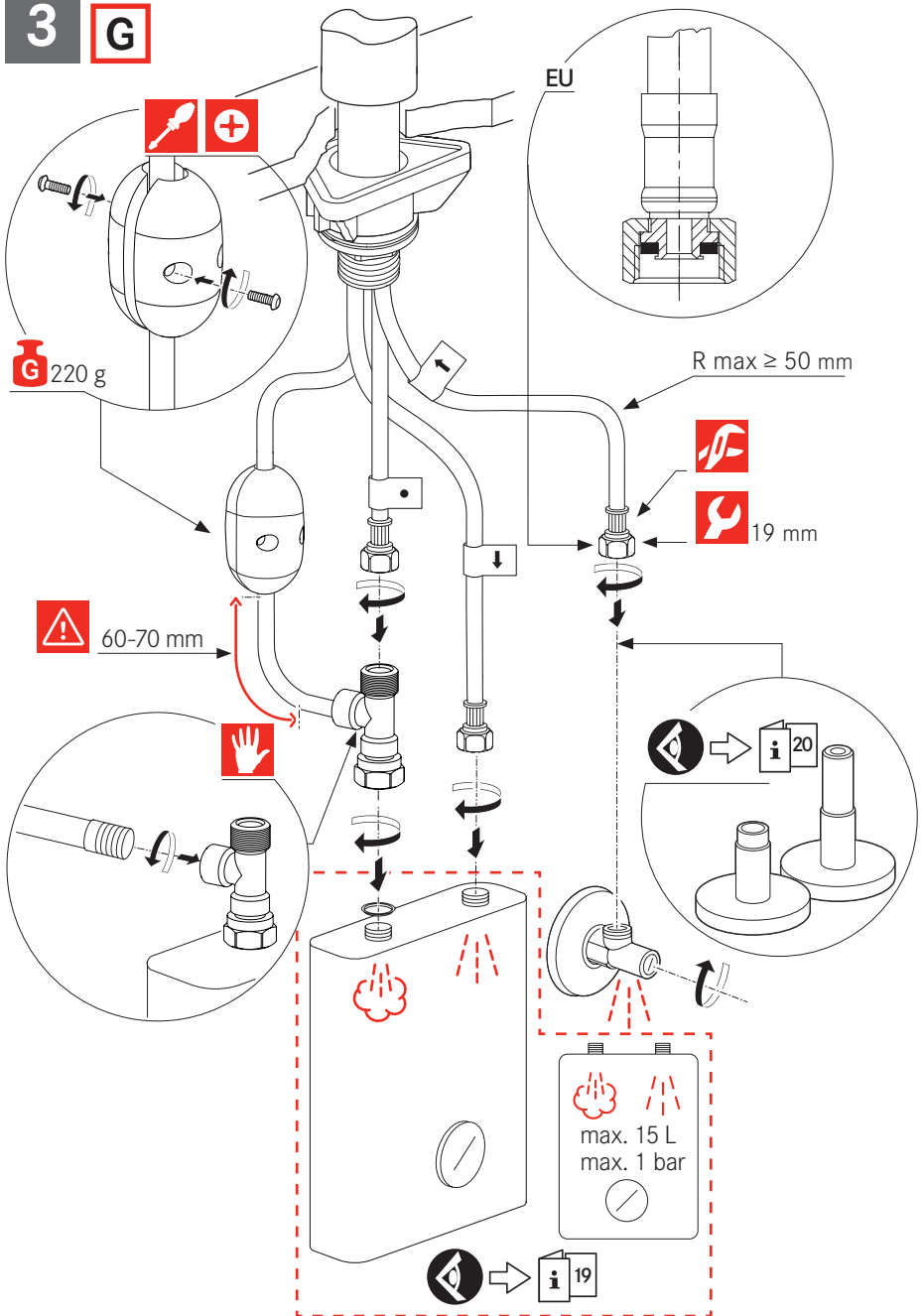
3

F H I



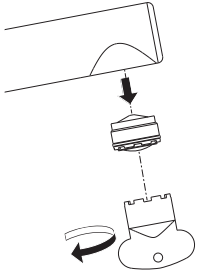
3

G



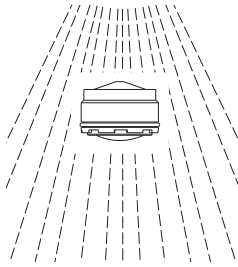
4

A	D	F
H	I	



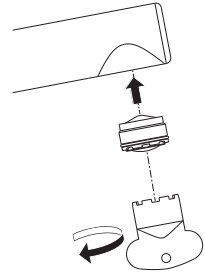
5

A	D	F
H	I	



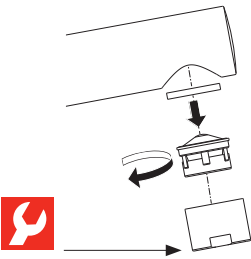
6

A	D	F
H	I	



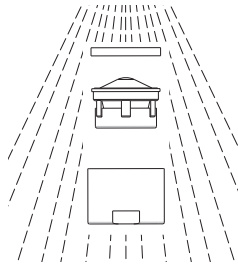
4

B	E	G
J	K	



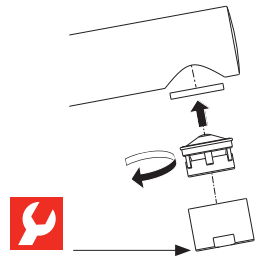
5

B	E	G
J	K	



6

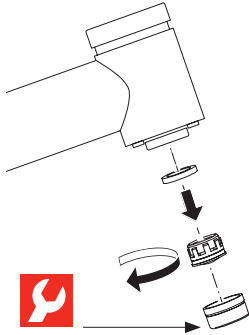
B	E	G
J	K	



4

C

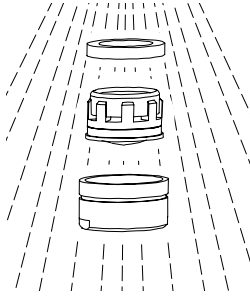
L



5

C

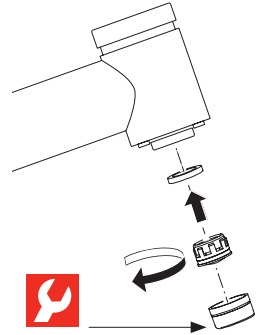
L

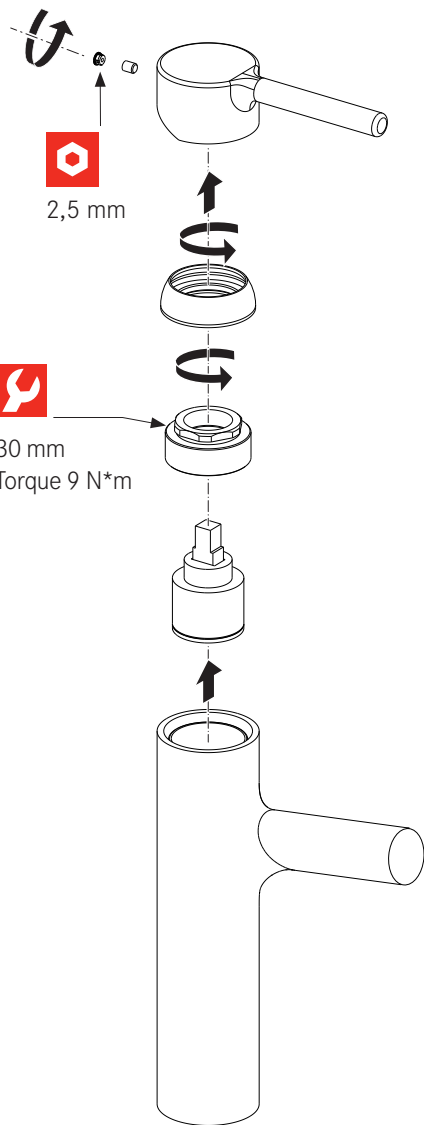


6

C

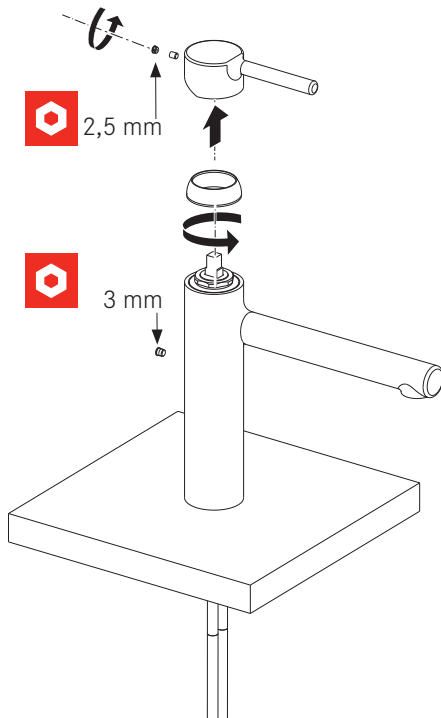
L



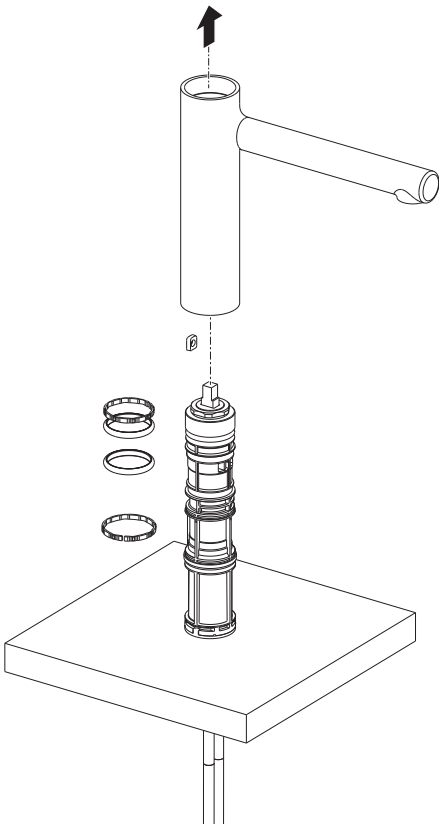


**A D F H I**

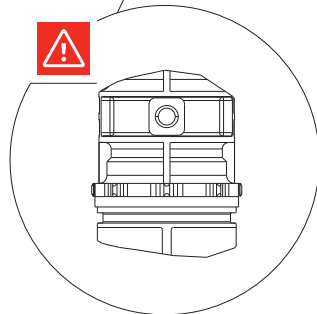
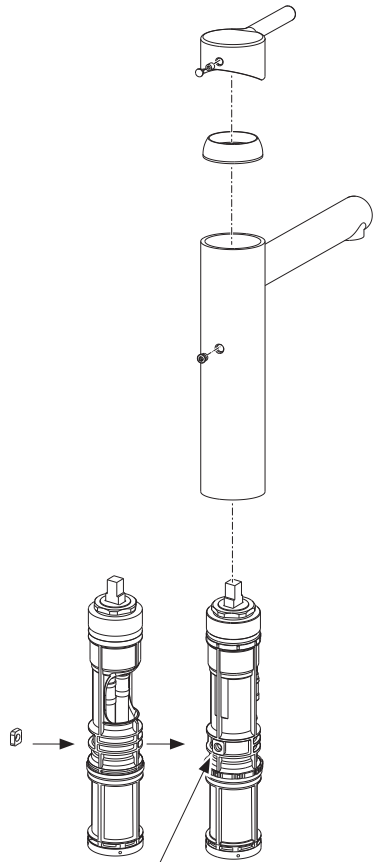
**1**



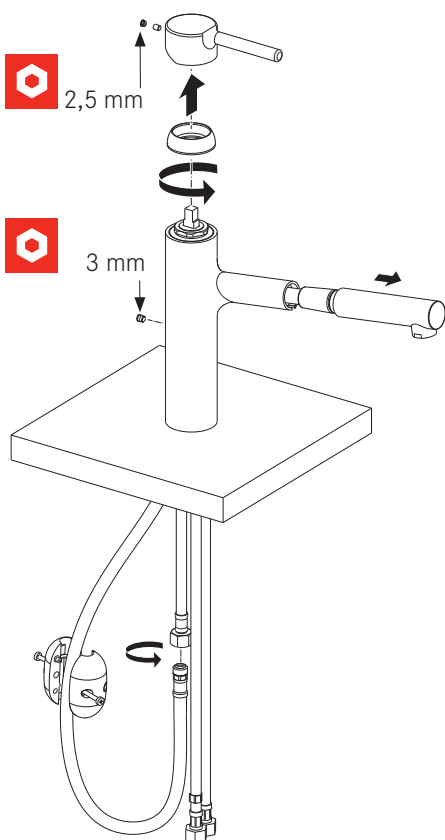
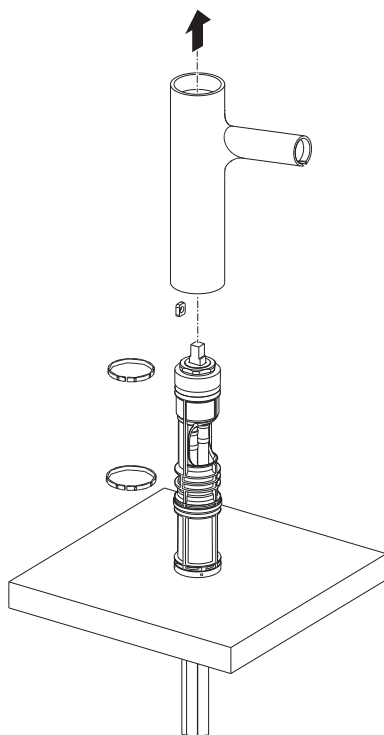
2

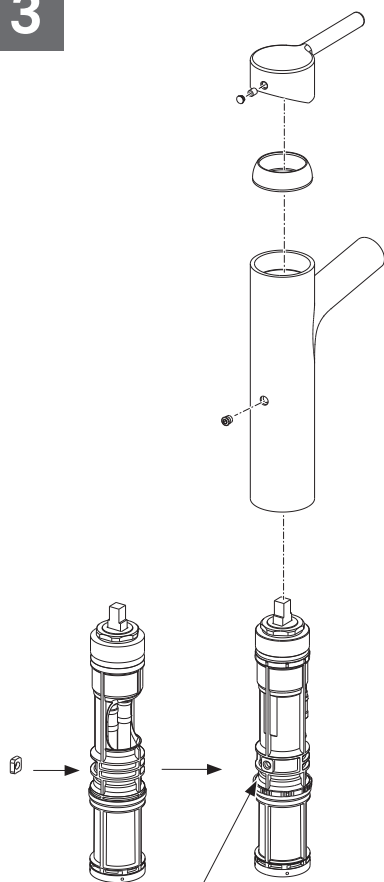
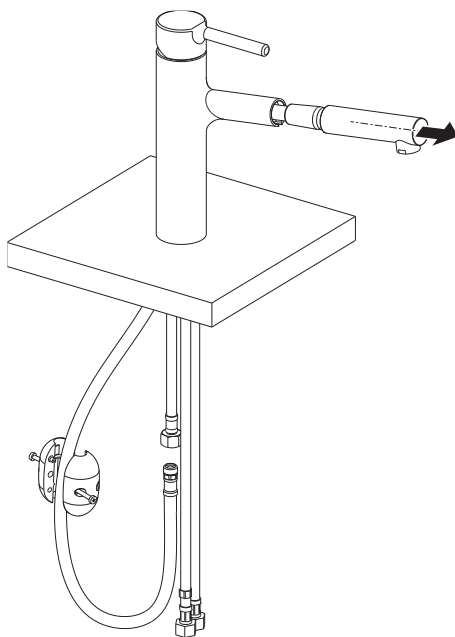


3



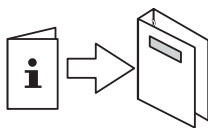


**B****C****E****G****J****K****L****1****2**

**B****C****E****G****J****K****L****3****4**



HU **A csomag nem tartalmazza\***



[www.franke.com](http://www.franke.com)



## Rendszeres ellenőrzések

- ▶ Rendszeresen ellenőrizze a csatlakozót és a zuhanytömlőt a következők tekintetében:
  - vízszivárgás
  - korrózió
  - mechanikus sérülés
- ▶ Kizárólag eredeti pótalkatrészeket használjon.
- ▶ Cserélje ki a szivárgó vagy csöpögő tömlőket.
- ▶ Cserélje ki a rozsdás vagy oxidált felületű tömlőket.
- ▶ Cserélje ki a tömlőket, ha mechanikus sérülés van rajtuk.

## Flexibilis cső cseréje

- ▶ Ne használjon csavarkulcsot vagy egyéb szerszámot a flexibilis cső csapra történő felszereléséhez. Ezeket csak kézzel szerelje fel.



- ▶ Szerelés előtt öblítse át alaposan a tömlőket.

Üzemi adatok	Érték		
Üzemi nyomás (ideális)	3 bar	45 psi	300 kPa
Üzemi nyomás (max.)*	5 bar	70 psi	500 kPa
Üzemi nyomás (min.)*	1 bar	14,5 psi	100 kPa
Víz hőmérséklet (ideális)	60 °C	140 °F	
Víz hőmérséklet (max.)	70 °C	158 °F	

\* Állandó nyomás biztosítása ajánlott.

- ▶ Áramláscsökkentők használata:

Víz hálózat nyomása	Nyomáscsökkentők
0-tól 2 barig	Nem szükséges
2-től 4 barig	A legrövidebb
4-től 6 barig	A leghosszabb
6 bar felett	Az áramlást a fali bemenő sarokszelepen keresztül vagy a berendezés előtti nyomáscsökkentővel csökkentheti

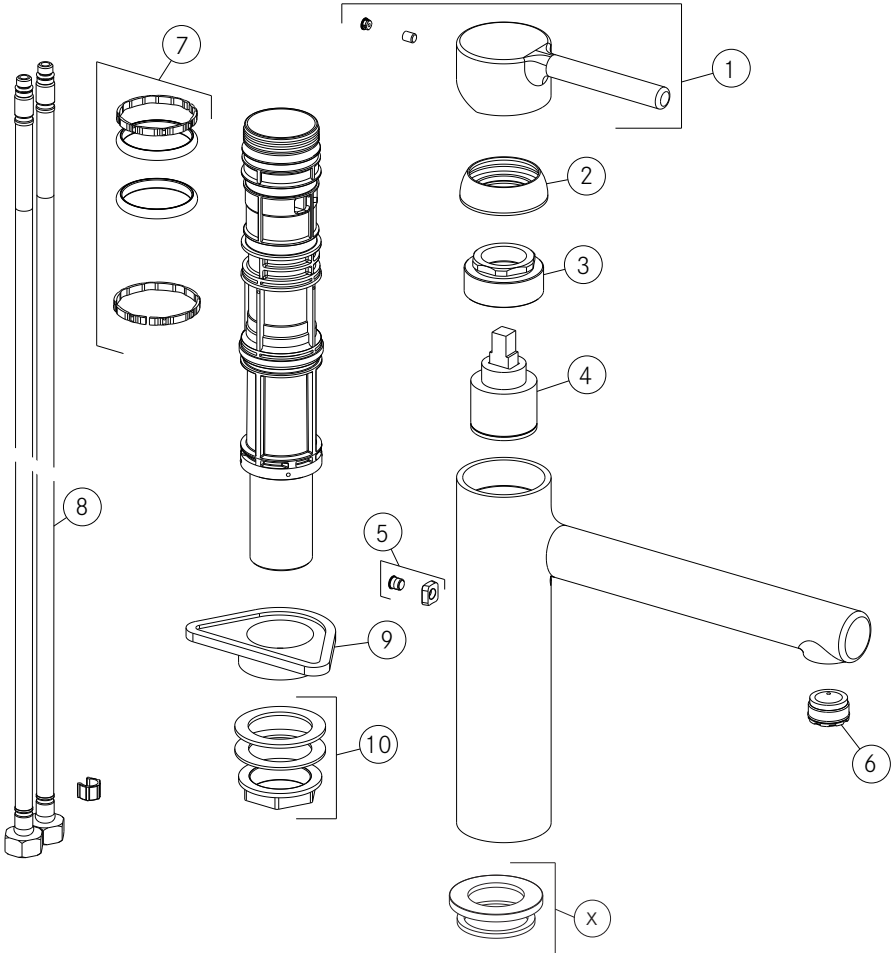


**A**

Tap Centro Swivel Spout Top Lever HP

**I**

Tap Centro Swivel Top HP Decor Steel



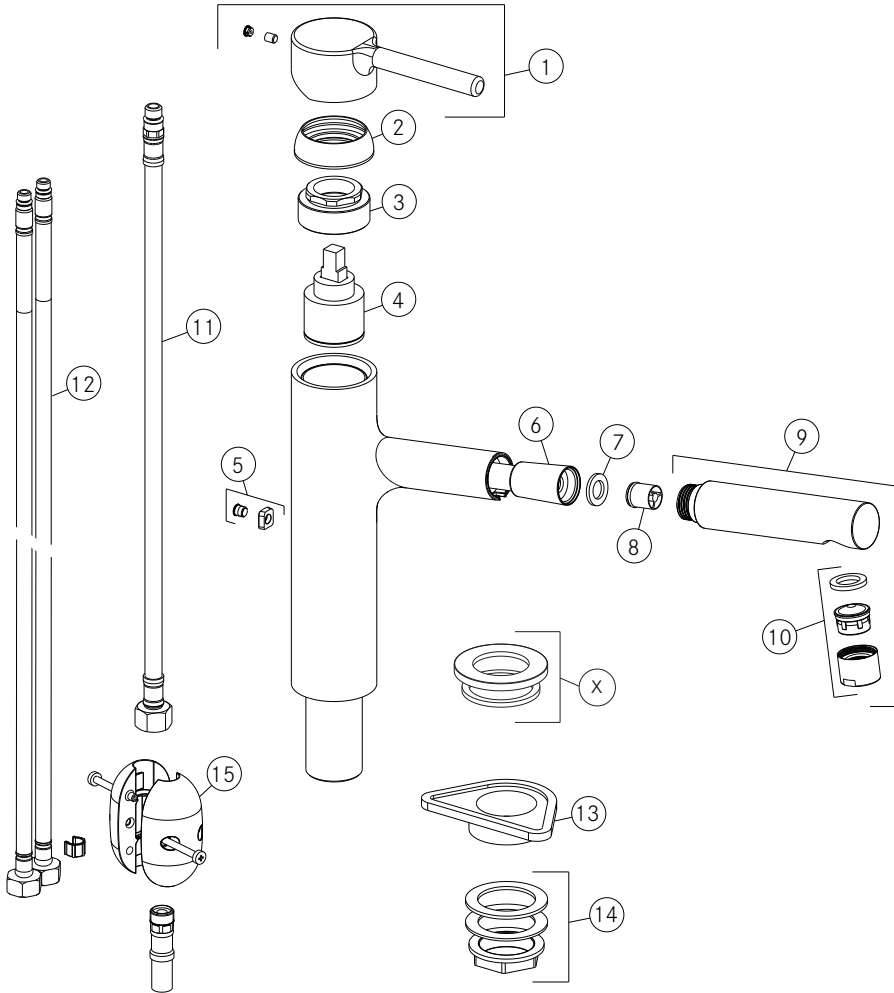
(X) :

**H**

Tap Centro Swivel Top HP Bi-decor

**B** Tap Centro Pull out Nozzle Top Lever HP

**K** Tap Centro Pull out Top HP Decor Steel



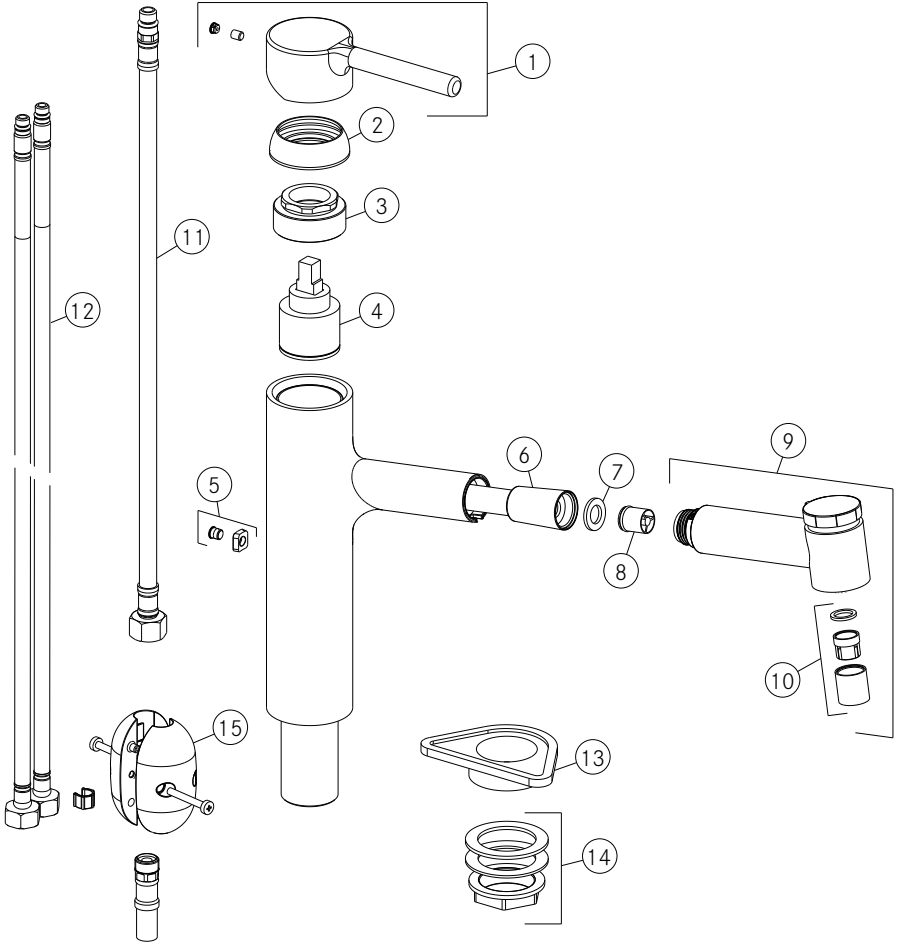
(X) : **J** Tap Centro Pull out Top HP Bi-decor

**C**

Tap Centro Spray Double Jet Top Lever HP

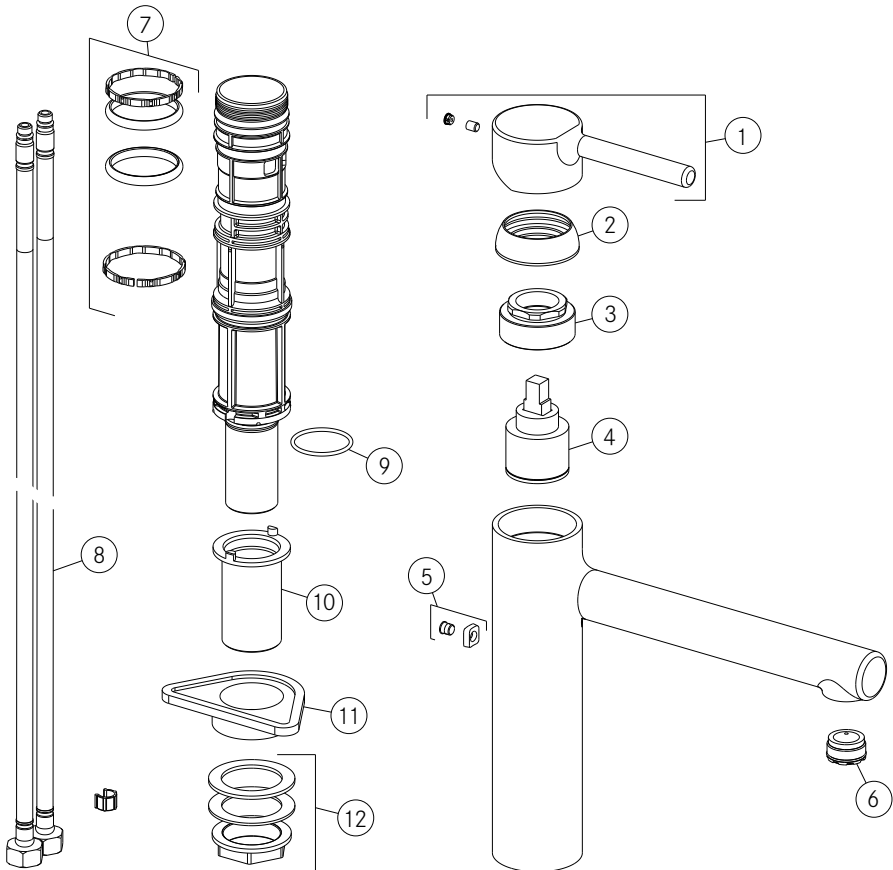
**L**

Tap Centro Spray Double Jet Top HP Decor-Steel



**D**

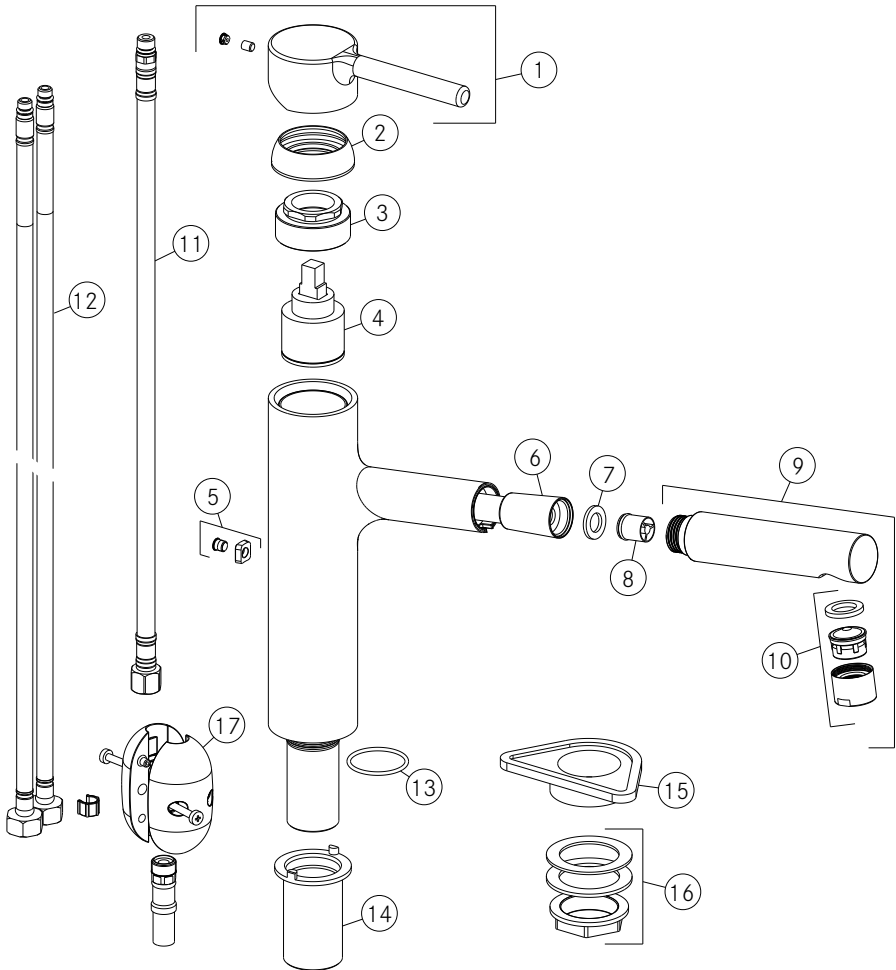
Tap Centro Swivel Top Lever Window Side HP



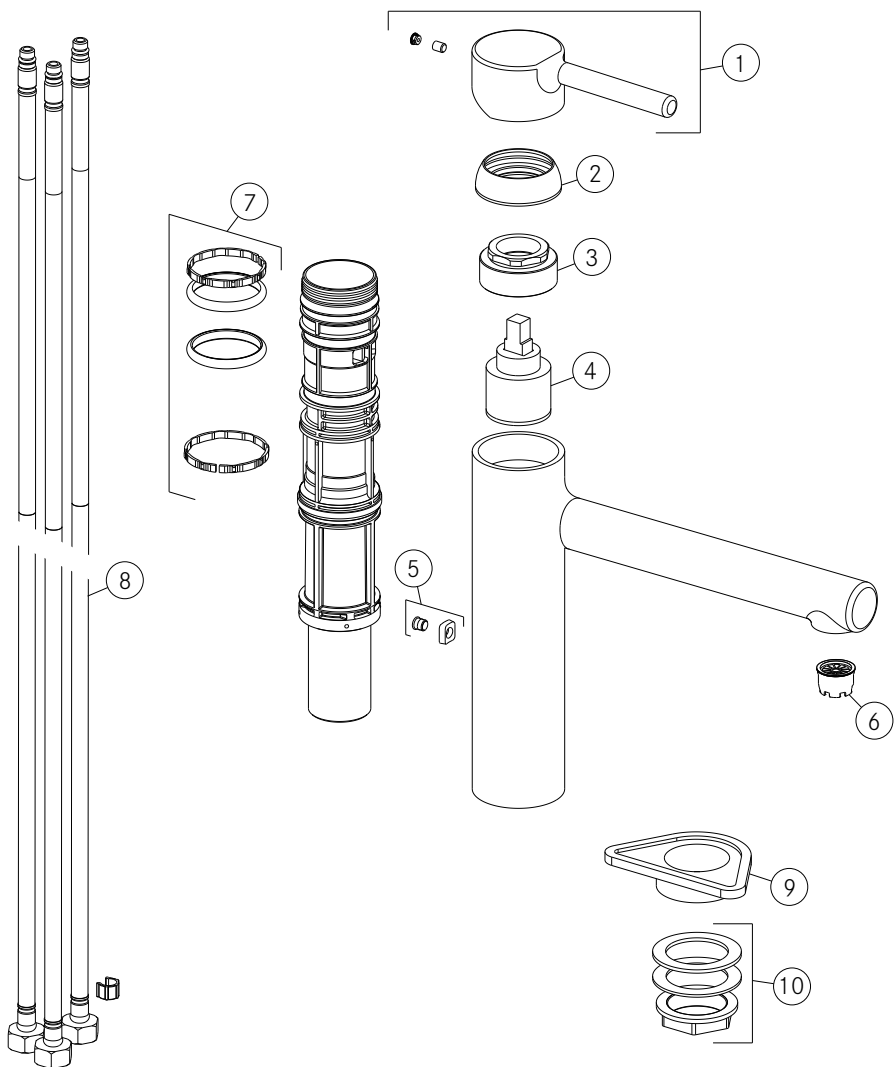


**E**

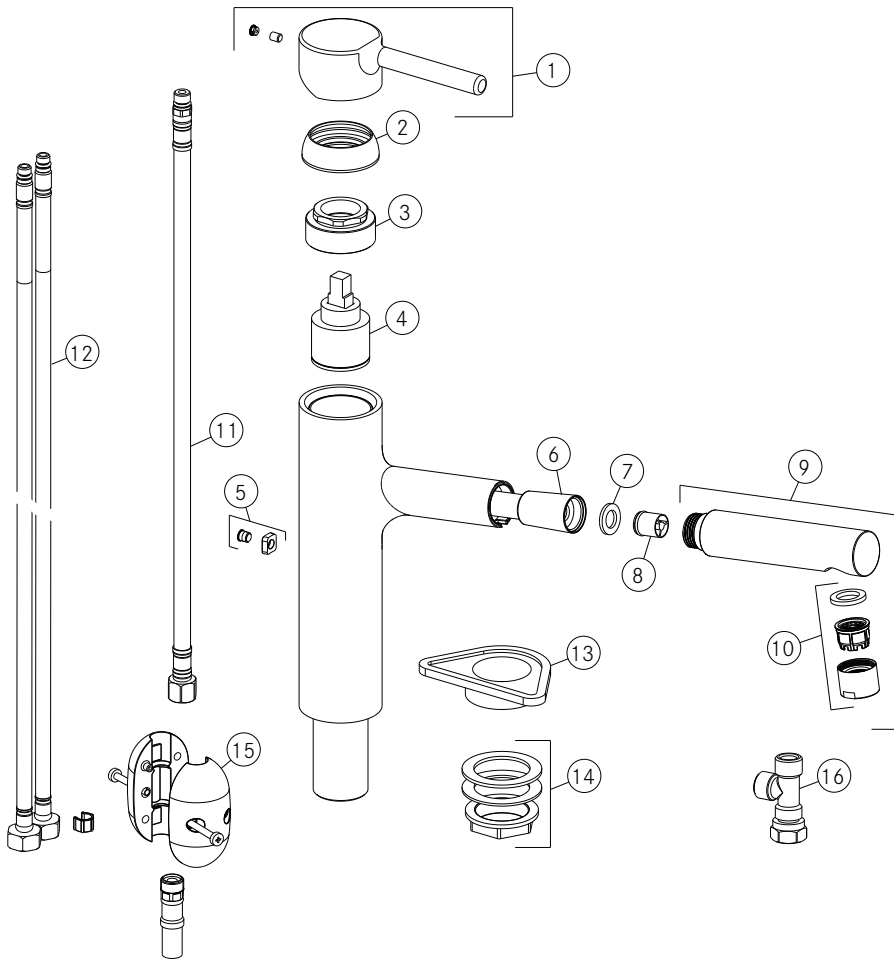
Tap Centro Pull out Nozzle Top Lever Window Side HP



**F** Tap Centro Swivel Top Lever Side LP



**G** Tap Centro Pull out Nozzle Top Lever Side LP





**GEMMA B&D Kft.**

2040 Budaörs,

Puskás Tivadar út 14.

Tel.: +36 23 769 245

e-mail: [info@gemmabd.hu](mailto:info@gemmabd.hu)

[www.gemmabd.hu](http://www.gemmabd.hu)

A folyamatos termékfejlesztés következtében a műszaki adatok módosítása előzetes értesítés nélkül is történhet. Használati utasításaink nagy erőfeszítéssel és rendkívüli gondossággal készülnek. Ennek ellenére a gyártás, szerkesztés, fordítás és / vagy nyomtatás közben pontatlanságok, hibák keletkezése nem kizárható. Ezekért azonban sem a gyártó, sem a forgalmazó, sem az eladó felelősséget nem vállal.