

## ATLAS NEO

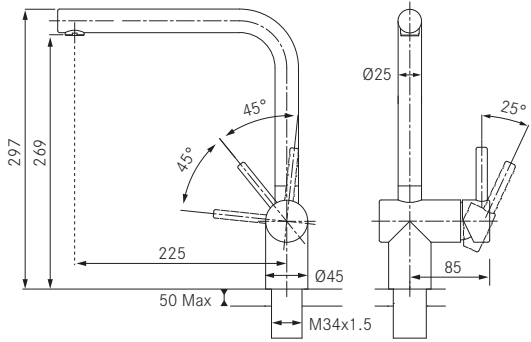
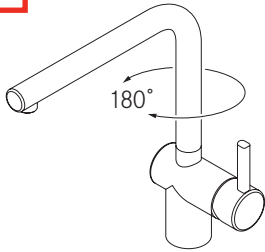
HR Priručnik za instalaciju i servis

Kuhinjska slavina



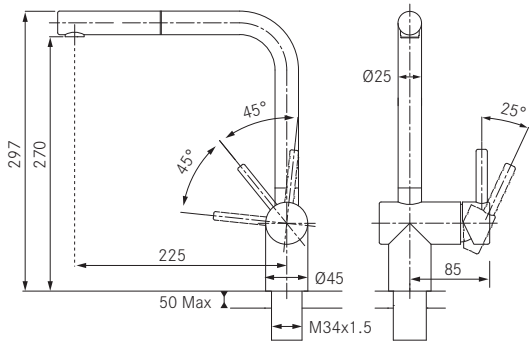
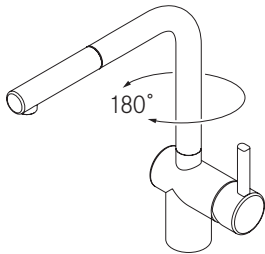
Tap Atlas Neo Swivel Side HP SS Version

**A**



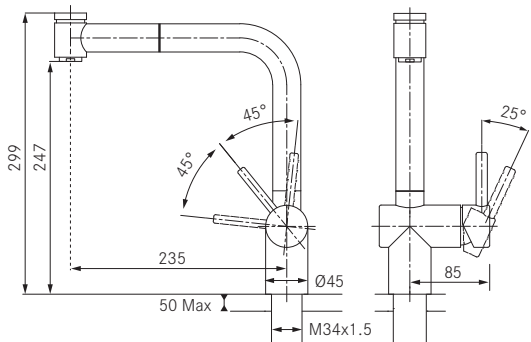
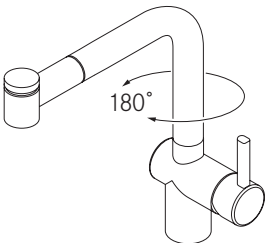
**B**

Tap Atlas Neo Nozzle side HP SS Version

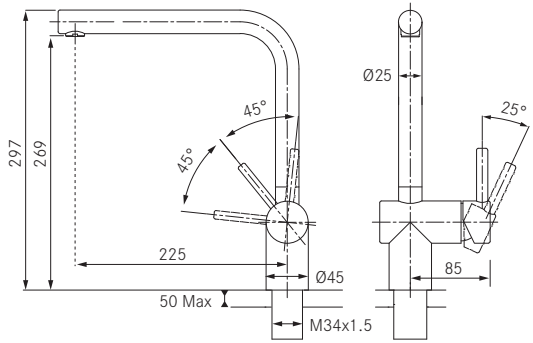
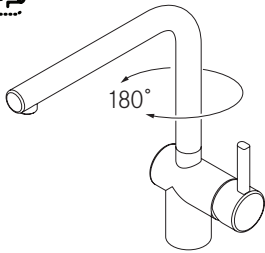


**C**

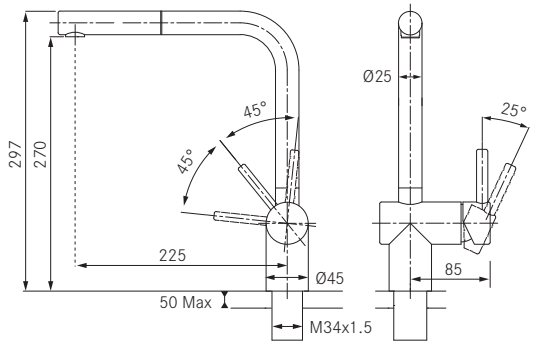
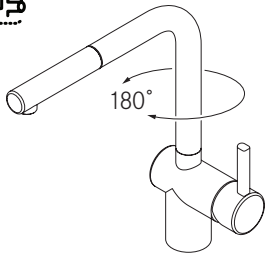
Tap Atlas Neo Spray Side HP with Jet Shower SS Version



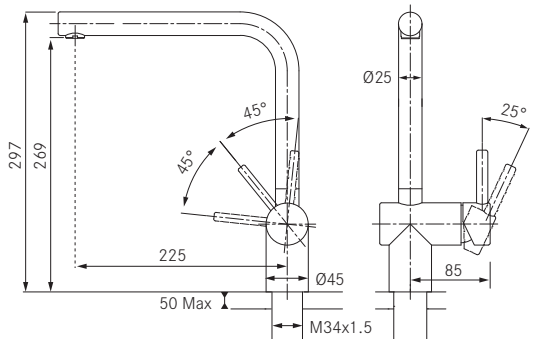
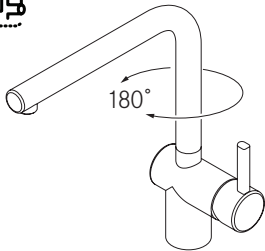
**D** Tap Atlas Neo Swivel Window Side HP SS Version



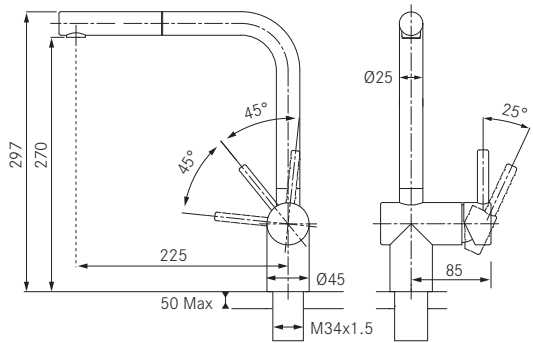
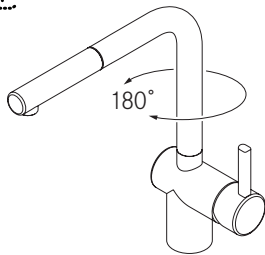
**E** Tap Atlas Neo Nozzle Window Side HP SS Version



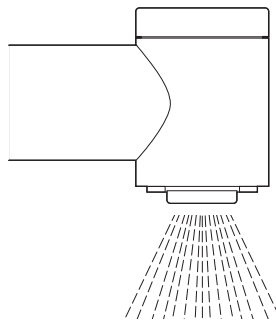
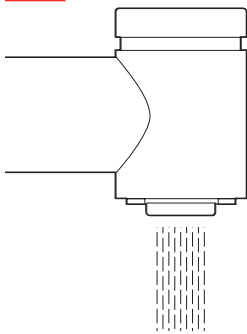
**F** Tap Atlas Neo Swivel Window Side LP SS Version



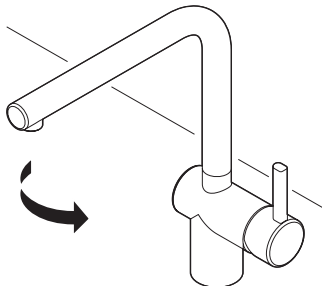
**G** Tap Atlas Neo Nozzle Window Side LP SS Version



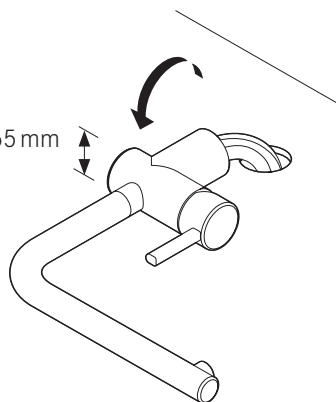
**i** **C**



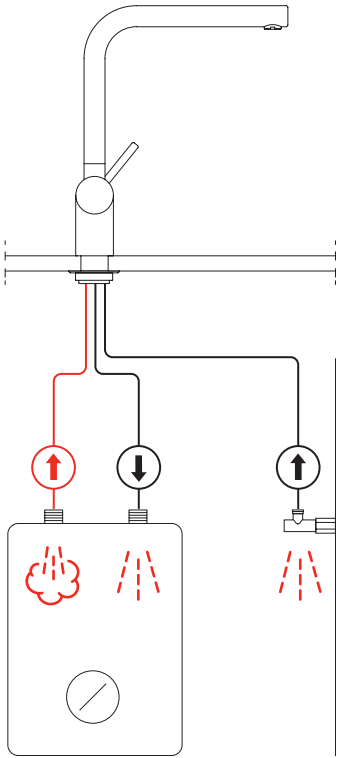
**i** **D** **E** **F** **G**



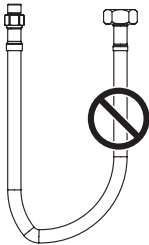
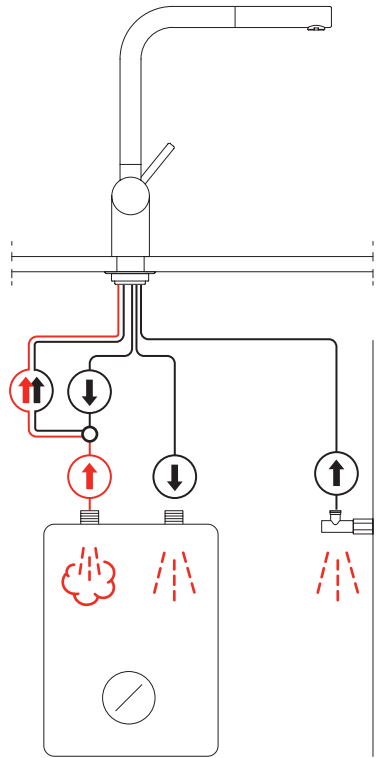
>65 mm



**i F**



**i G**

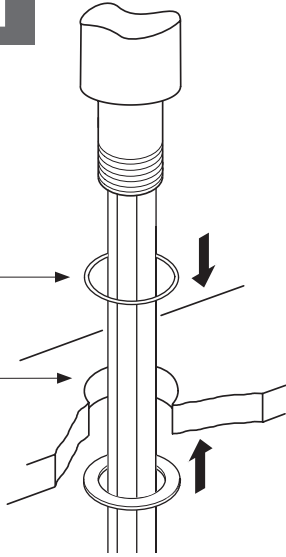




1



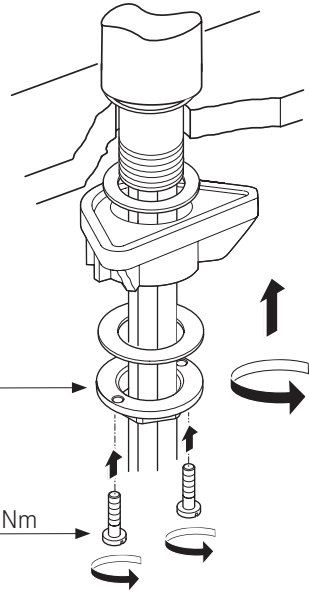
ø35 mm



2



7Nm



3

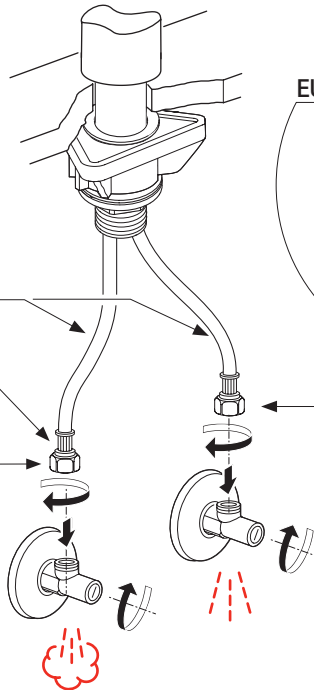
A

D

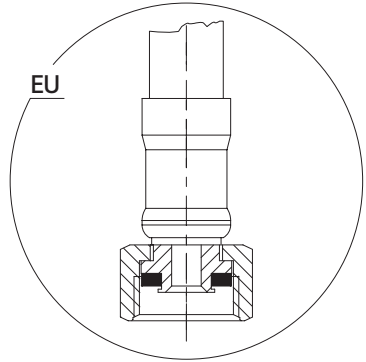
Rmax ≥ 50mm



19 mm  
UK: 23 mm



EU

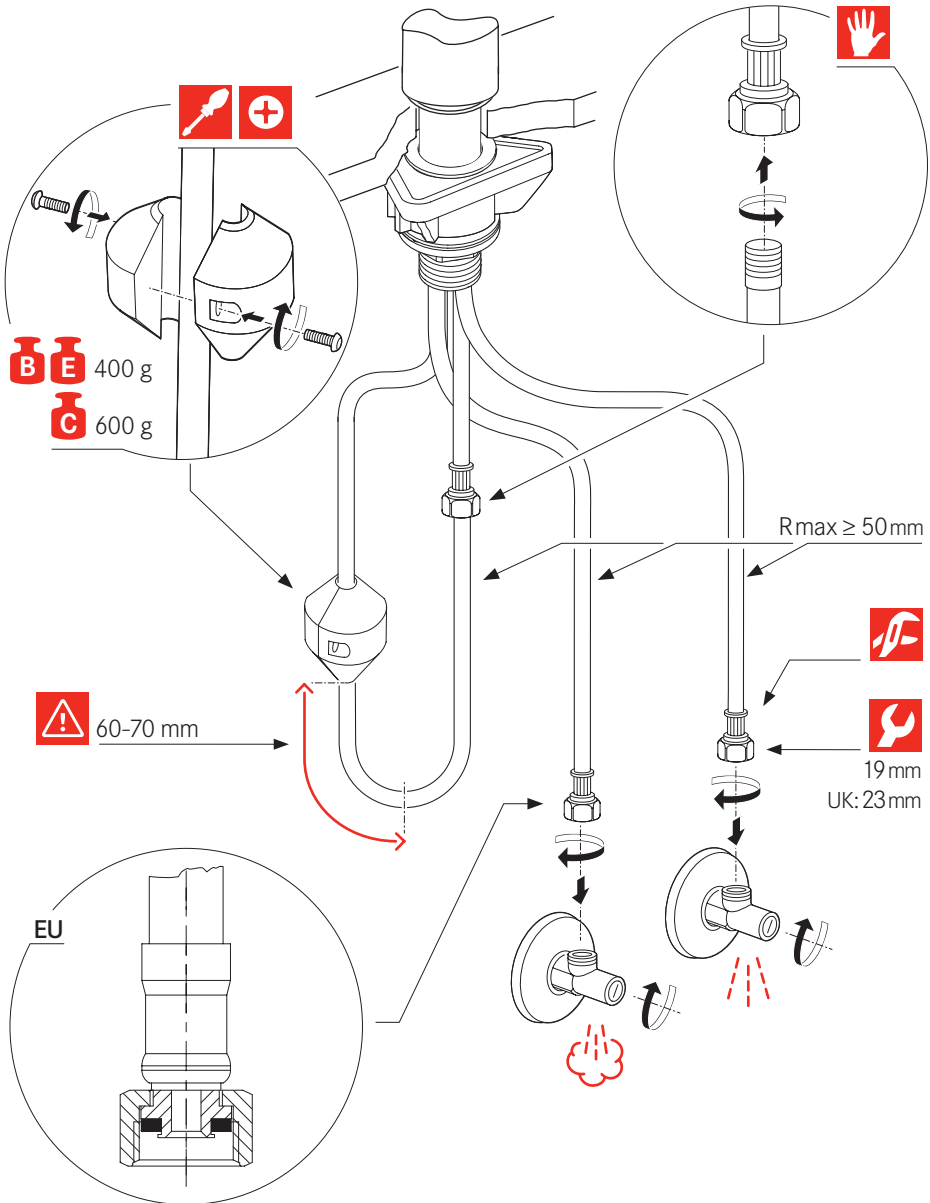


3

B

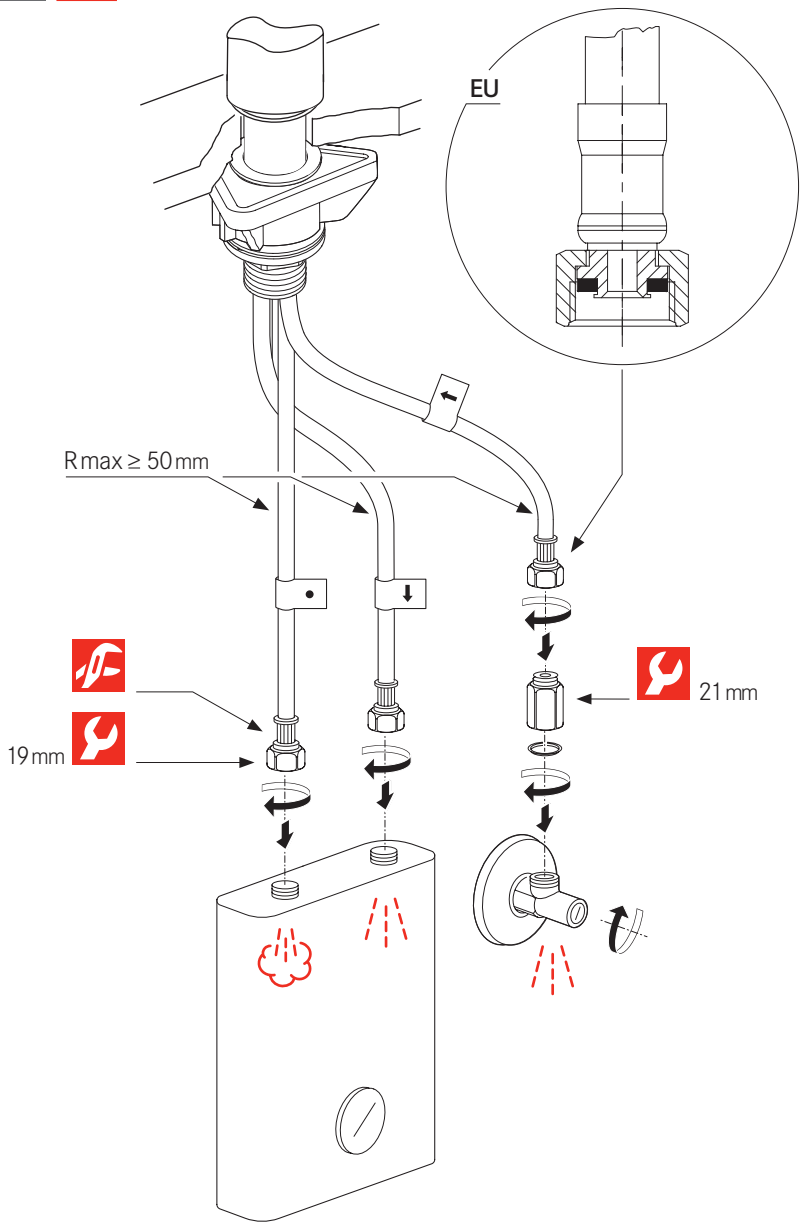
C

E



3

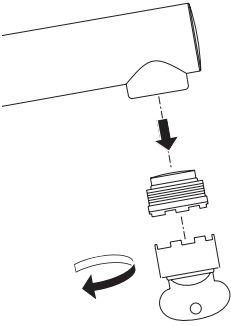
F



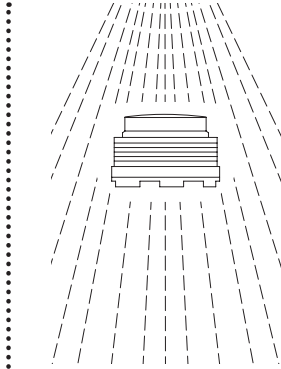




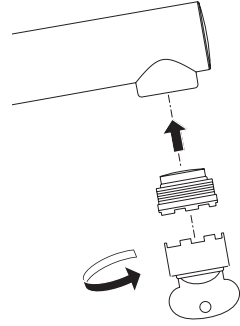
4



5

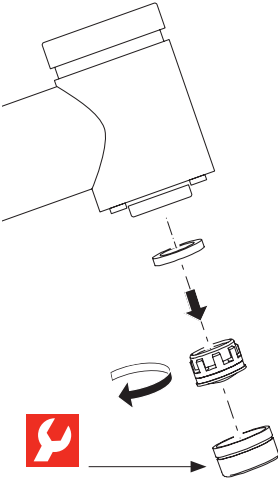


6



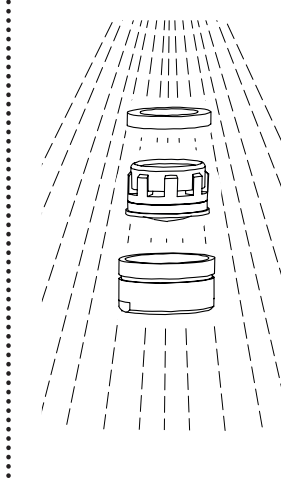
4

C



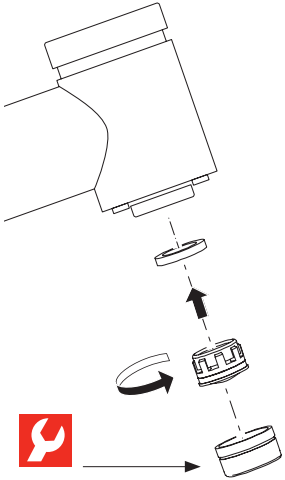
5

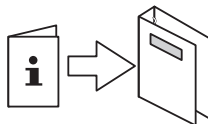
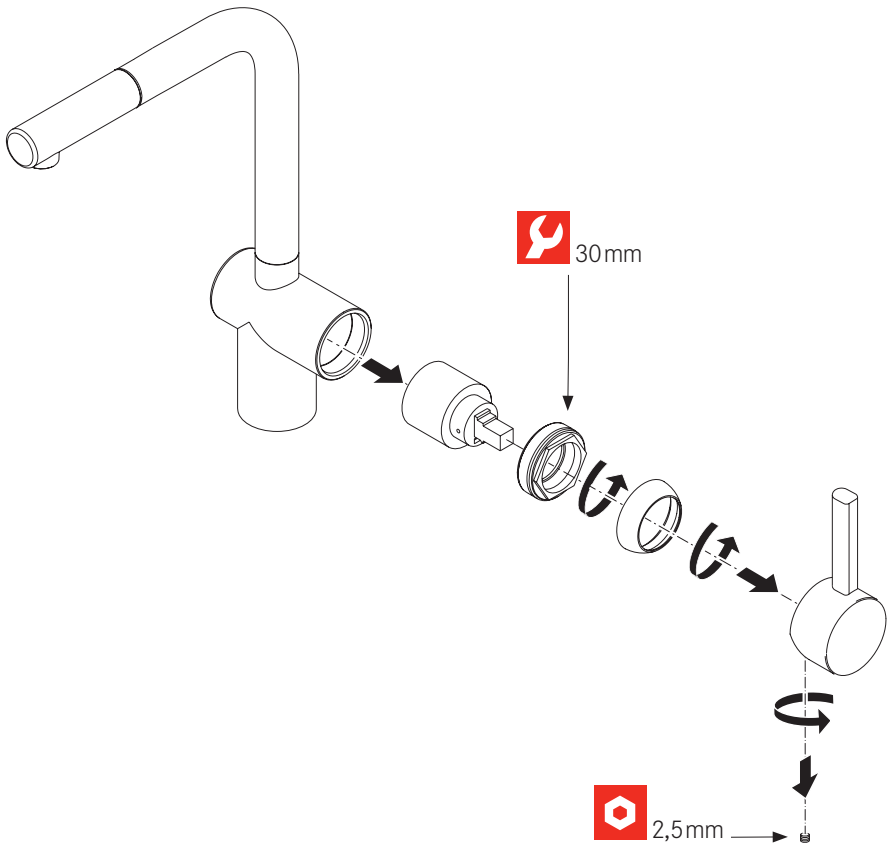
C



6

C





[www.franke.com](http://www.franke.com)



### Povremene provjere

- ▶ Povremeno provjerite spoj i crijeva za tuševe s obzirom na sljedeće:
  - Vodonepropusnost
  - Korozija
  - Mehanička oštećenja
- ▶ Upotrebljavajte samo originalne rezervne dijelove.
- ▶ Zamijenite crijeva koja su vlažna ili cure.
- ▶ Zamijenite crijeva s hrđavim ili oksidiranim površinama.
- ▶ Zamijenite crijeva koja pokazuju znakove mehaničkog oštećenja.



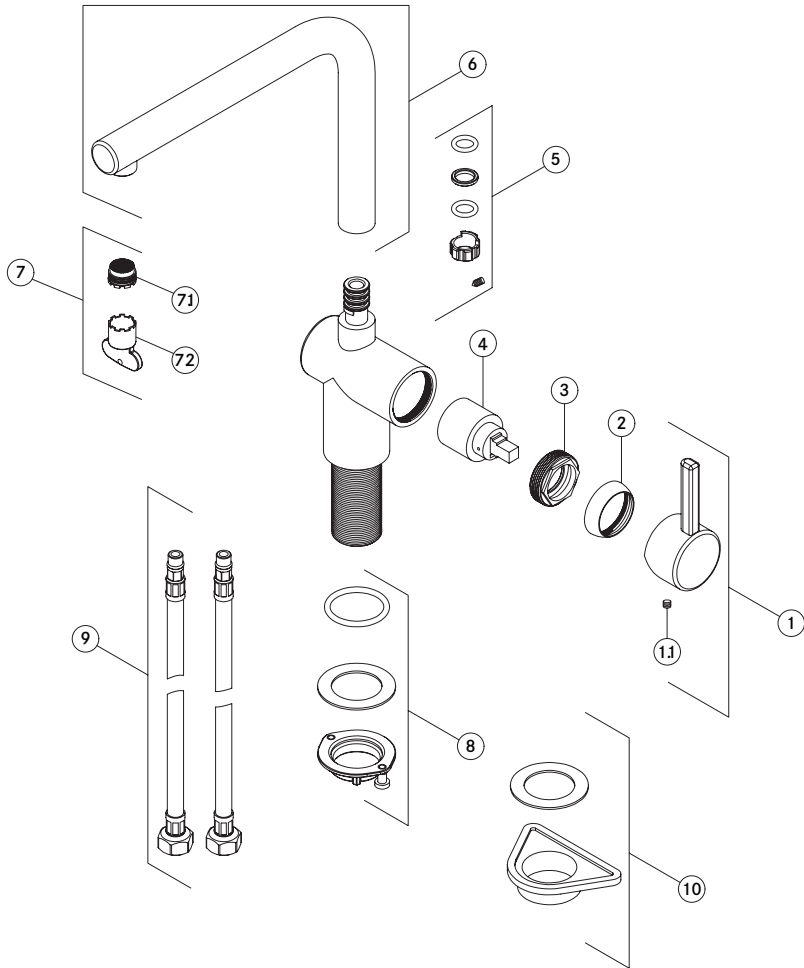
- ▶ Prije instalacije temeljito isperite sve cijevi.

Radni podaci	Vrijednost		
Radni tlak (idealni)	3 bar	45 PSI	300 kPa
Radni tlak (maks.)*	5 bar	70 PSI	500 kPa
Radni tlak (min.)*	1 bar	14,5 PSI	100 kPa
Temperatura vode (idealna)	60 °C	140 °F	
Temperatura vode (maks.)	70 °C	158 °F	

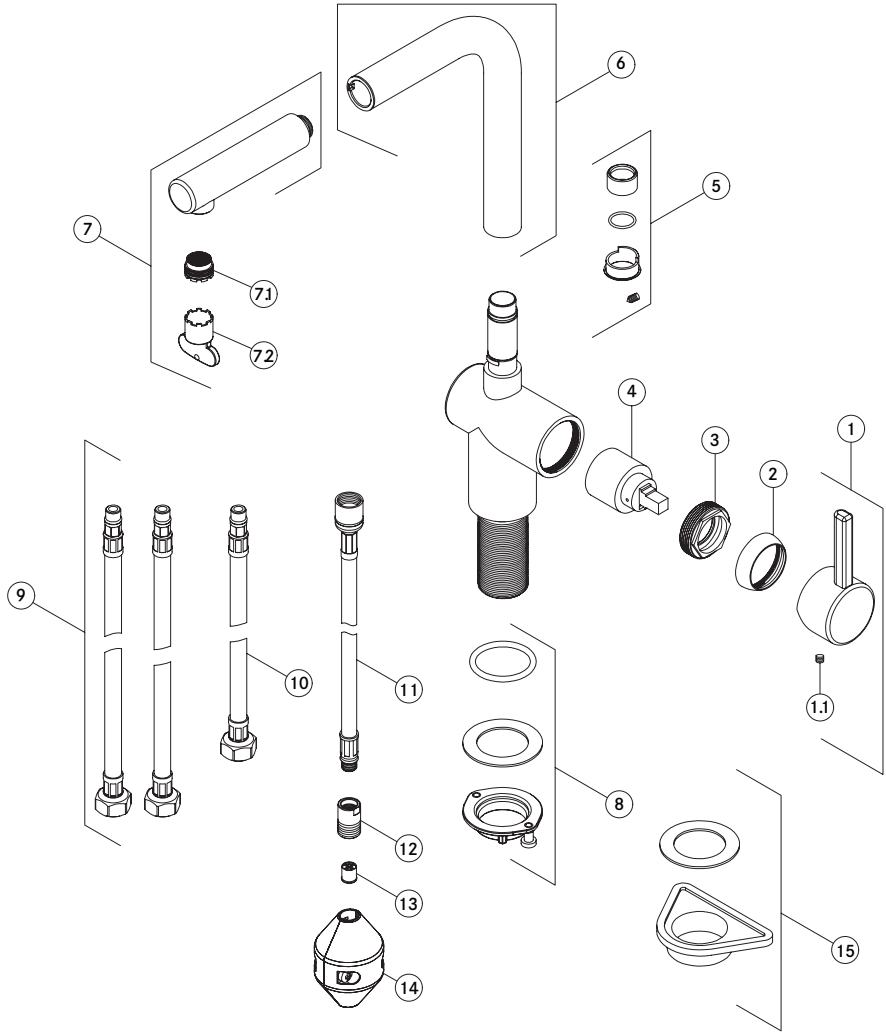
\* Preporučuje se jednak tlak.

**A**

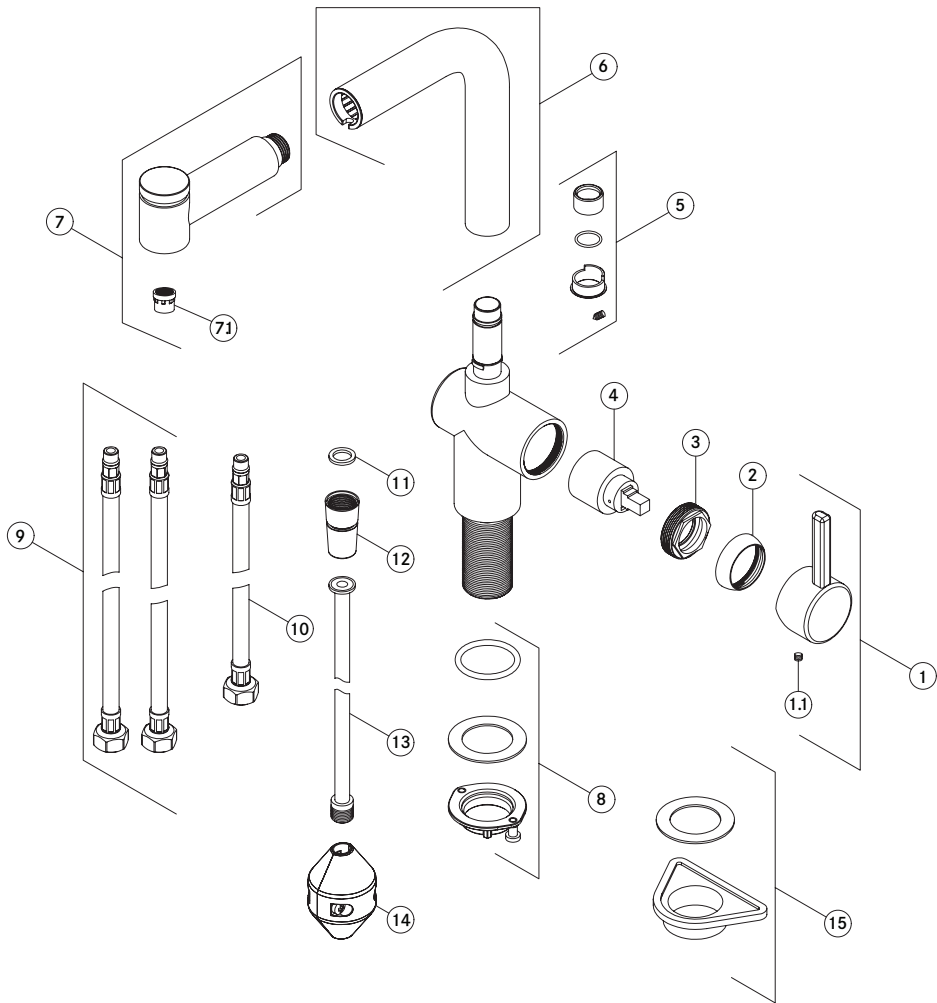
Tap Atlas Neo Swivel Side HP SS Version



**B** Tap Atlas Neo Nozzle side HP SS Version

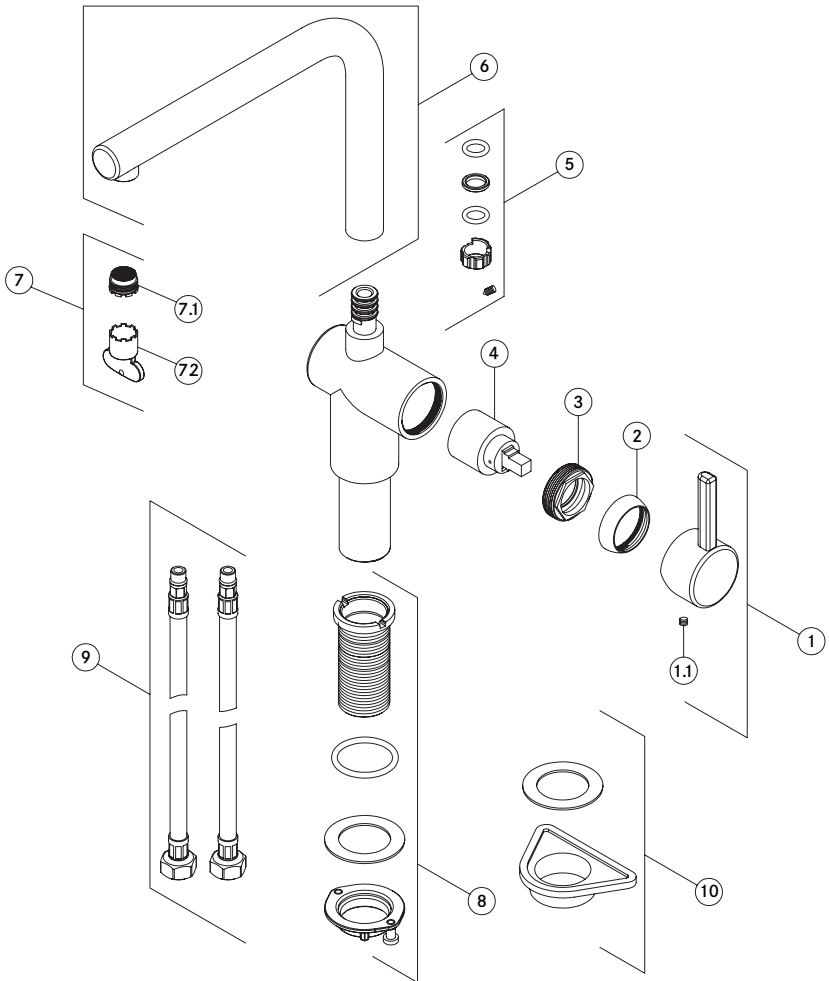


**C** Tap Atlas Neo Spray Side HP with Jet Shower SS Version





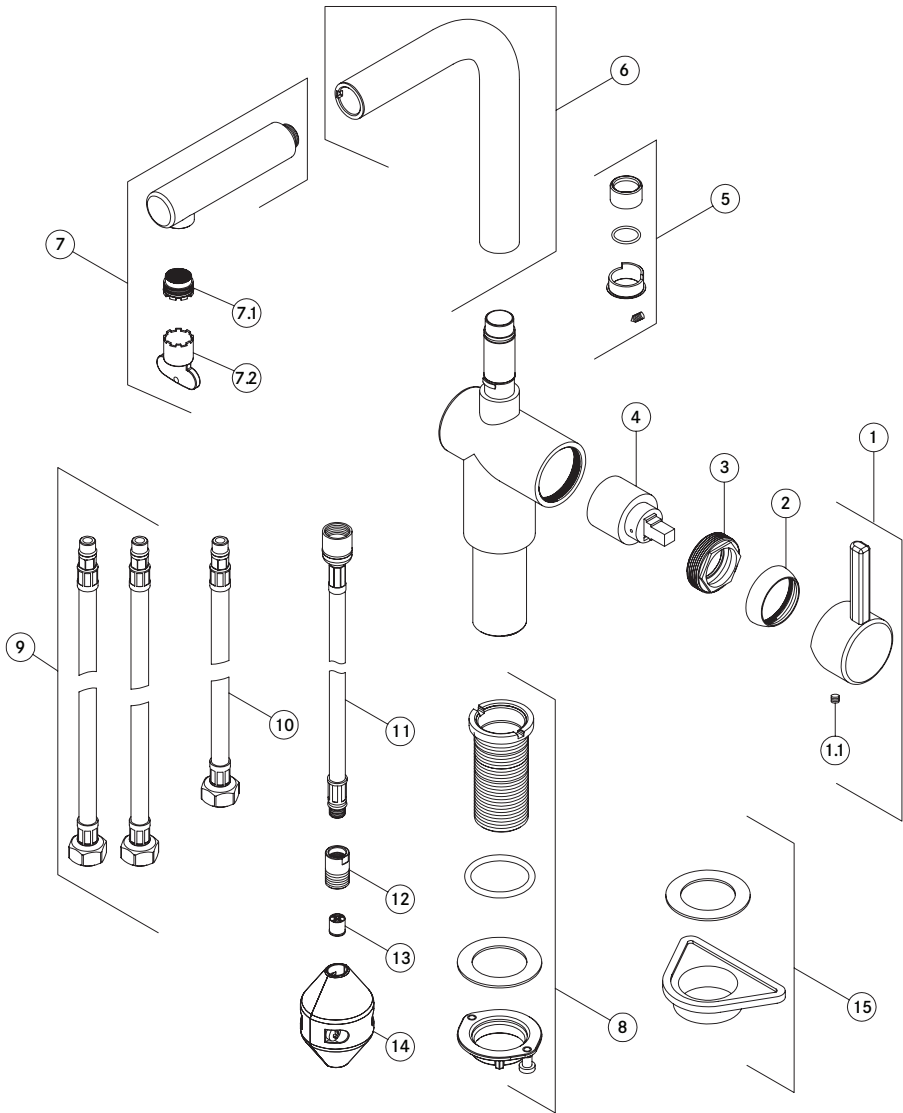
Tap Atlas Neo Swivel Window Side HP SS Version





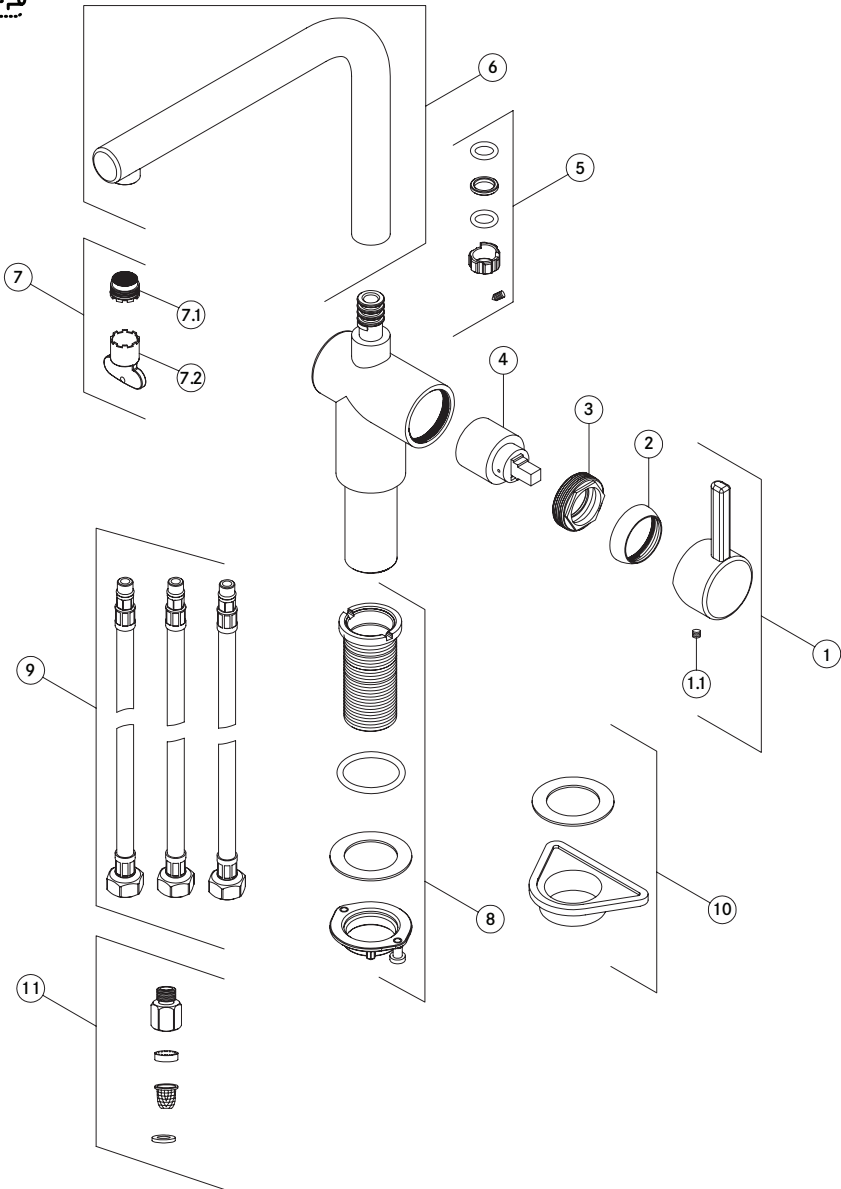


Tap Atlas Neo Nozzle Window Side HP SS Version

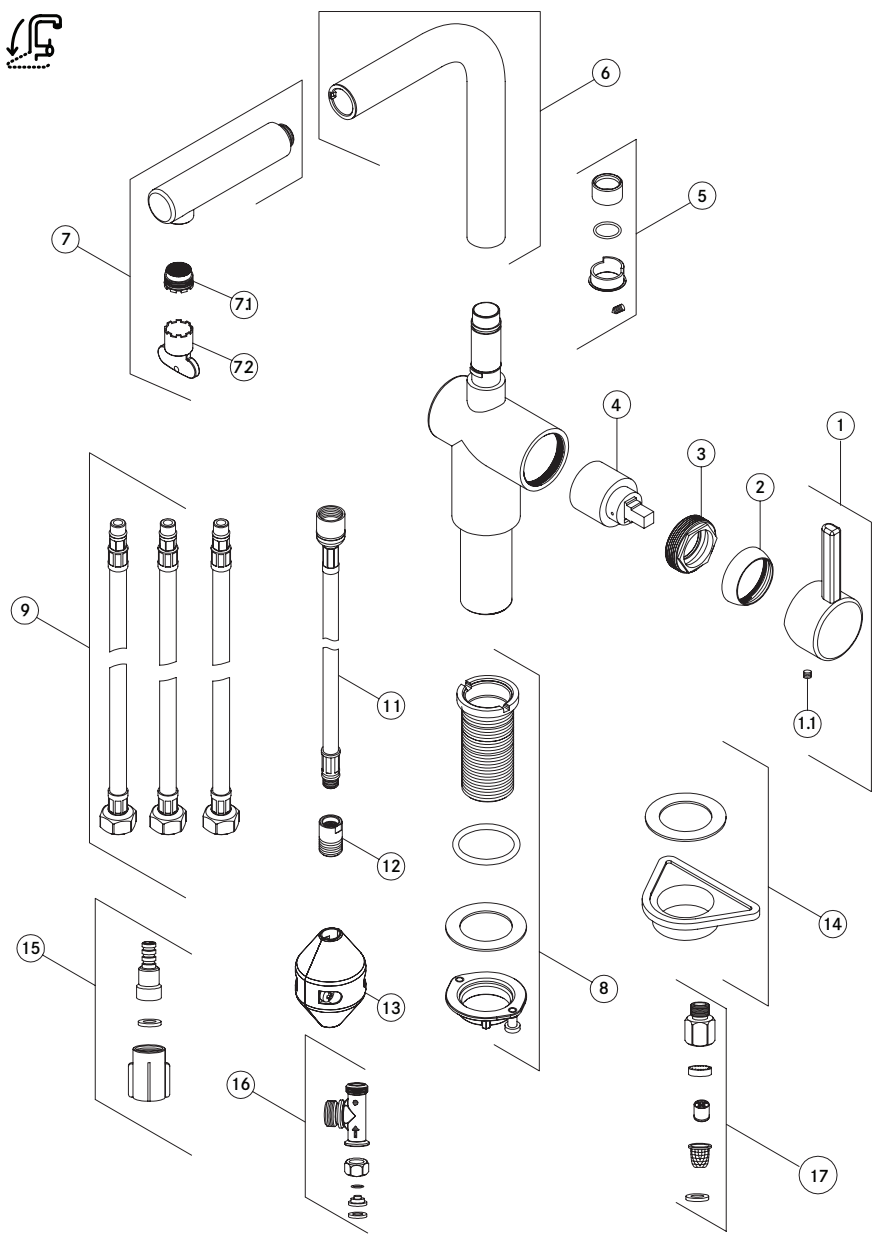


**F**

## Tap Atlas Neo Swivel Window Side LP SS Version



**G** Tap Atlas Neo Nozzle Window Side LP SS Version



**Gemma B&D d.o.o.**

Uvoznik i distributer za RH  
10000 Zagreb, Prisavlje 2

**Veleprodaja:**

tel.: 00385 1 6196 446, 6195 604

fax: 00385 1 6195 581

e-mail: [veleprodaja@gemma.hr](mailto:veleprodaja@gemma.hr)

**Centralni servis:**

tel/fax: 00385 1 6195 582

e-mail: [servis@gemma.hr](mailto:servis@gemma.hr)

[www.gemma.hr](http://www.gemma.hr)

**Gemma BH d.o.o.**

Uvoznik i distributer za BiH  
71210 Sarajevo, Trešnje 1  
(naselje Doglodi - Ilidža)

**Veleprodaja:**

tel./fax: 00387 33 775 472,

00387 33 775 473

e-mail: [info@gemma.ba](mailto:info@gemma.ba)

[www.gemma.ba](http://www.gemma.ba)

**Gemma B&D d.s.d.****Podgorica**

Uvoznik i distributer za CG  
81000 Podgorica, Serdara Jola  
Piletića bb (PC Palada)

**Veleprodaja:**

tel.: 00382 20 672 961

e-mail: [veleprodaja@gemmabd.me](mailto:veleprodaja@gemmabd.me)

[www.gemmabd.me](http://www.gemmabd.me)

---

Radi stalnog poboljšavanja proizvoda može doći do promjene tehničkih podataka bez prethodne obavijesti. Ove upute napravljene su s mnogo truda i s najvećom pažnjom, no pogreške u procesu izrade i/ili prijevoda uputa uvijek su moguće. Stoga proizvođač i prodavatelj ne preuzimaju odgovornost za eventualne netočne navode, pogreške u prijevodu ili tiskarske pogreške u ovim uputama.