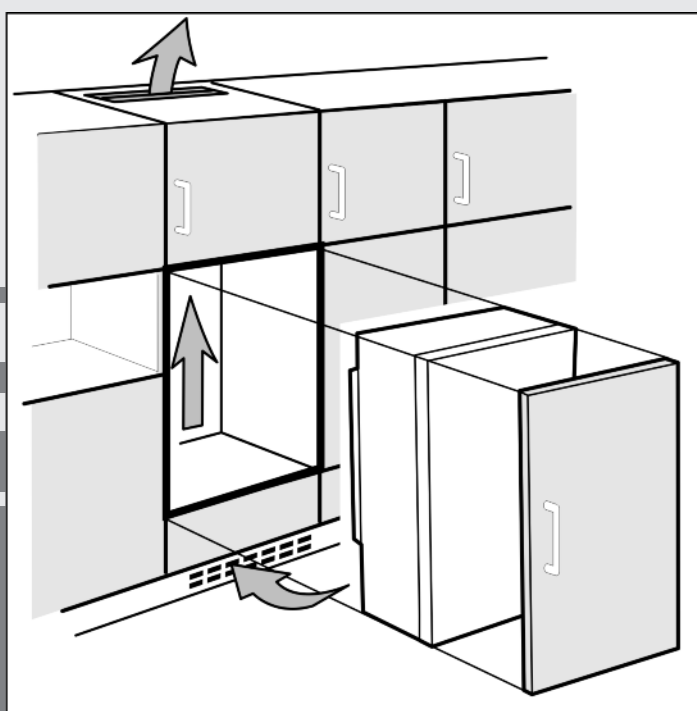


# Navodila za postavitve

Hladilniki in zamrzovalniki za integrirano uporabo, drsna vrata



SL




231116 **7088078 - 00**

IKS/ IGS ... LC

# LIEBHERR

## Vsebina

1	Splošna varnostna navodila.....	2
2	Transport naprave.....	2
3	Postavitve naprave.....	2
4	Appliance dimensions.....	3
5	Recess dimensions.....	3
6	Ventilation of the kitchen unit.....	4
7	Changing over door hinges.....	4
8	Installing the appliance in the recess.....	4
9	Disposing of packaging.....	5
10	Connecting the appliance.....	5
	Illustrated installation instructions.....	6

Proizvajalec si nenehno prizadeva za nadaljnji razvoj vseh vrst in modelov izdelkov. Zato vas prosimo, da razumete, da si moramo pridržati pravico do spremembe zasnove, opreme in tehničnih lastnosti




Da bi se seznanili z vsemi prednostmi vašega novega gospodinjskega aparata, natančno preberite informacije v teh navodilih.

Navodila se nanašajo na več modelov. Zato lahko prihaja do razlik. Besedilo, ki se nanaša na določeni gospodinjski aparat, je označeno z zvezdico (\*).

Navodila za ukrepe so označena z znakom ►, rezultati ukrepa so označeni z znakom ▷ .

## 1 Splošna varnostna navodila

- Napravo postavite, priključite in odstranite izključno v skladu z navodili. Posebej pozorno preberite poglavje "Mere vdolbine" (glejte 5) in "Prezračevanje kuhinjskega elementa« (glejte 6).
- Električna stenska vtičnica mora biti enostavno dostopna, tako da lahko v sili napravo hitro izklopate iz električnega omrežja. Nahajati se mora zunaj neposrednega območja za napravo.

	NEVARNOST	označuje okoliščino z neposredno nevarnostjo, ki lahko, če je ne preprečite, povzroči smrt ali hude telesne poškodbe
	POZOR	označuje nevarno okoliščino, ki lahko, če je ne preprečite, povzroči smrt ali hude telesne poškodbe.
	PREVIDNO	označuje nevarno okoliščino, ki lahko, če je ne preprečite, povzroči manjše ali srednje hude telesne poškodbe.
	OPOZORILO	označuje nevarno okoliščino, ki lahko, če je ne preprečite, povzroči materialno škodo.
	Opomba	označuje koristne informacije in nasvete.

## 2 Transporting the appliance



### CAUTION

Risk of injury and danger of damage as a result of incorrect transport!

- Transport the appliance in a packed condition.
- Transport the appliance upright.
- Do not transport the appliance without assistance.

## 3 Installing the appliance



### WARNING

Risk of fire due to short circuit!

If the mains cable/connector of the appliance or of another appliance touch the rear of the appliance, the mains cable/connector may be damaged by the appliance vibrations, leading to a short circuit.

- Stand the appliance so that it is not touched by connectors or main cables.
- Do not plug the appliance or any others into sockets located near the rear of the appliance.



### WARNING

Fire hazard due to dampness!

If live parts or the mains lead become damp this may cause short circuits.

- The appliance is designed for use in enclosed areas. Do not operate the appliance outdoors or in areas where it is exposed to splash water or damp conditions.
- Only use the appliance when it is installed.



### WARNING

Fire hazard due to refrigerant!

The refrigerant R 600a is environmentally friendly but flammable. Escaping refrigerant may ignite.

- Do not damage the piping of the refrigeration circuit.



### WARNING

Fire hazard and danger of damage!

► Do not place appliances emitting heat e.g. microwaves, toasters etc. on the appliance!

### Note\*

The bags at the rear of the appliance are important for proper operation. Their contents are nontoxic and nonhazardous.

- Do not remove the bags!

### NOTICE

Risk of damage due to condensate!

- Do not install the appliance directly alongside a further refrigerator/freezer.

### NOTICE

Risk of damage due to condensation!

Your **IG..** or **IB..** up to a height of **880 mm** is fitted with an overhead heating system.

- Do not stack refrigerators or freezers unless the bottom appliance is your **IG..** or **IB..** model up to a height of 880 mm.



## WARNING

Blocked ventilation openings pose a risk of fire and damage!

► Always keep the ventilation openings clear. Always ensure that the appliance is properly ventilated!

- In the event that the appliance is damaged, contact the supplier immediately before connecting to the mains.
- The floor at the site must be flat and level.
- Do not install the appliance in a location where it is exposed to direct radiation of the sun, next to a cooker, heater and similar.
- Do not install the appliance alone: it is best to work together with two or more people.
- The more R 600a refrigerant there is in the appliance, the larger the room in which the appliance is standing needs to be. In rooms that are too small, a flammable mix of gas and air may be created if there is a leak. According to the EN 378 standard, every 11 g of R 600a refrigerant requires at least 1 m<sup>3</sup> space in the room for the appliance. The amount of refrigerant in your appliance is on the type plate inside the appliance.
- If the appliance is installed in a very damp environment, condensed water may form on the outside of the appliance. Always make sure that there is good ventilation - both at air inlet and outlet - at the site of installation.

### After installation:

► Remove protective films, adhesive tapes and transport lock parts etc.

### Note

► Clean the appliance (see **Operating Instructions, Chapter "Cleaning the appliance"**).

## 5 Recess dimensions

The appliance is built-in and therefore completely enclosed by a kitchen unit. The kitchen unit concerned must be built exactly to the prescribed dimensions and allow for sufficient ventilation, both at air inlet and outlet, to ensure proper appliance operation.

EN

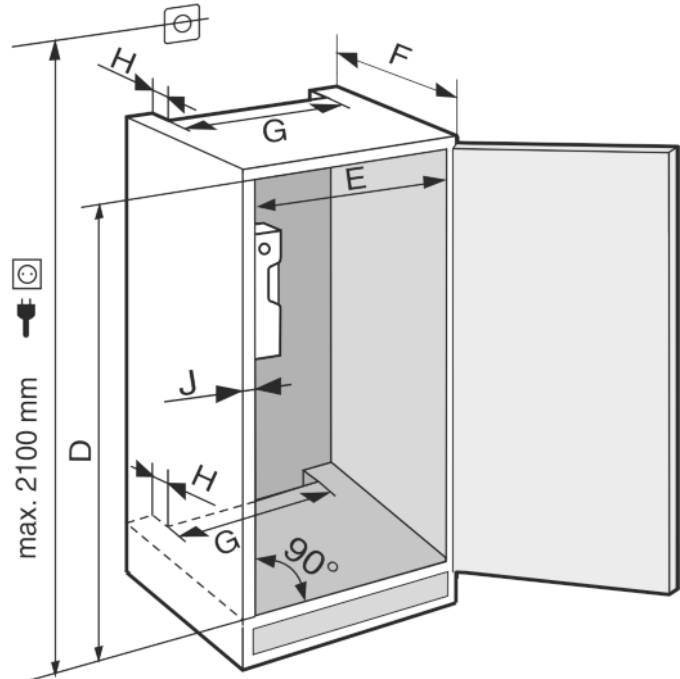


Fig. 2

	D (mm)	E (mm)	F (mm)	G (mm)	H (mm)	J (mm)
IKS 16.., IGS 16..	874 — 890	560	min. 550, 560 recommended	min. 500	min. 40	max. 19
IKS 23..	1220 — 1236	570				

The specified energy consumption applies to a unit depth of 560 mm. The appliance will work properly at a unit depth of 550 mm, but at a slightly higher energy consumption.

- Check the wall thickness of the adjoining units: the walls must be at least 16 mm thick.
- Only install the appliance in robust, stable kitchen units. Secure the units against tipping.
- Align the kitchen unit using a spirit level and marking square and if necessary compensate with shims.
- Ensure that the floor and walls of the unit are at right angles to one another.

## 4 Appliance dimensions

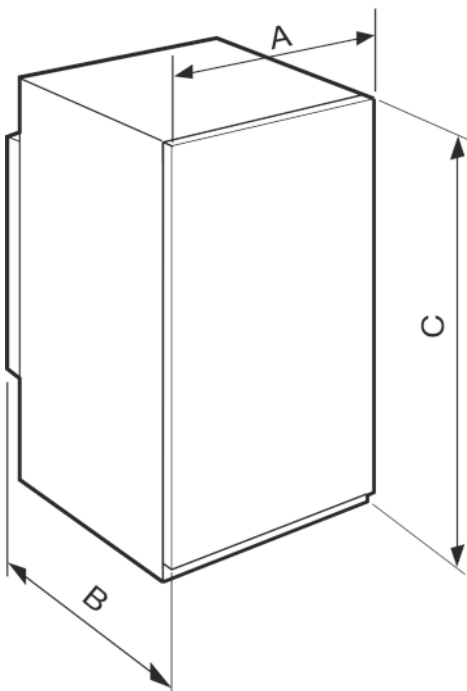


Fig. 1

	A (mm)	B (mm)	C (mm)
IKS 16.., IGS 16..	540	544	872
IKS 23..	540	544	1218

# Ventilation of the kitchen unit

## 6 Ventilation of the kitchen unit

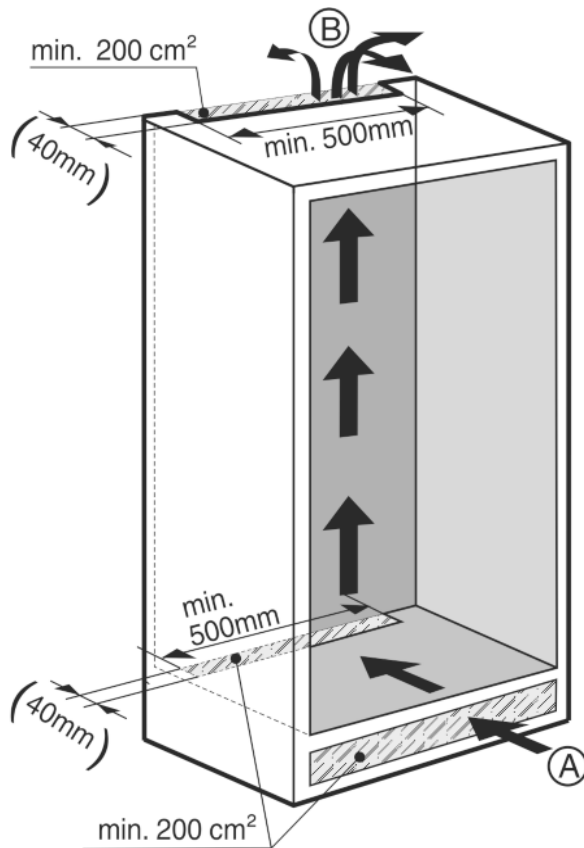


Fig. 3

- There must be an effective ventilation shaft of at least 200 cm<sup>2</sup> per appliance at the air inlet (A) and outlet (B) vent.
- The principle applies that the larger the ventilation shaft, the more energy-saving the operation of the appliance.
- The depth of the ventilation shaft at the back of the cabinet must be at least 40 mm.

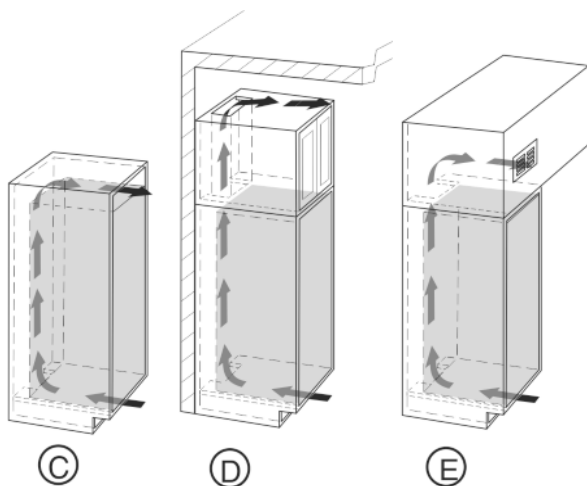


Fig. 4

- The upper ventilation shaft can either be positioned directly above the appliance with an optional ventilation grille Fig. 4 (C), close to the ceiling above the unit Fig. 4 (D) or as an air outlet opening in a false ceiling Fig. 4 (E).

## 7 Changing over door hinges



### WARNING

Risk of injury through door dropping out!  
If the fastening components are not screwed in tightly enough, the door may drop out. This can lead to serious injury. What is more, the door may also not close fully, so that the appliance may not refrigerate properly.

- Screw the bottom and top turn hinges tightly into place (with 4 Nm).



There is a risk of injury during this stage! Please observe the safety instructions!



The instructions apply to several models. Only carry out this step if it is relevant for your appliance.



Choose between the alternatives given.



Loosen the screws only, do not undo them all the way.



Check the screws and tighten if necessary.

- While changing over the door hinges, observe the safety instructions above and also the information in the symbols key.

Change the hinges over as shown at the end of the book.



## 8 Installing the appliance in the recess



### WARNING

Fire hazard from short-circuiting!

- When pushing the appliance into the recess, take care not to crush, jam or damage the mains power cable.
- Do not operate the appliance with a defective mains power cable.



There is a risk of injury during this stage! Please observe the safety instructions!



The instructions apply to several models. Only carry out this step if the appliance is equipped with the corresponding feature.



Choose between the alternatives given.



Loosen the screws only, do not undo them all the way.



Check the screws and tighten if necessary.

- Please take note of the information in the symbols key during installation.

Install the appliance into the recess as shown at the end of the book.



## 9 Disposing of packaging



### WARNING

Danger of suffocation due to packing material and plastic film!  
▶ Do not allow children to play with packing material.

The packaging is made of recyclable materials:

- corrugated board/cardboard
- expanded polystyrene parts
- polythene bags and sheets
- polypropylene straps
- nailed wooden frame with polyethylene panel\*



▶ Take the packaging material to an official collecting point.

## 10 Connecting the appliance

### NOTICE

Failure to connect properly  
Damage to the electronics.

- ▶ Do not use a standalone inverter.
- ▶ Do not use an energy saving plug.



### WARNING

Failure to connect properly  
Fire.

- ▶ Do not use an extension cable.
- ▶ Do not use distributor blocks.

The type of current (alternating current) and voltage at the installation site have to conform with the data on the type plate (see Appliance at a glance).

The socket must be properly earthed and fused. The tripping current for the fuse must be between 10 A and 16 A.

The socket must be easily accessible so that the appliance can be quickly disconnected from the supply in an emergency. It must be outside the area of the rear of the appliance.

- ▶ Check the electrical connection.
- ▶ Plug in the power plug.



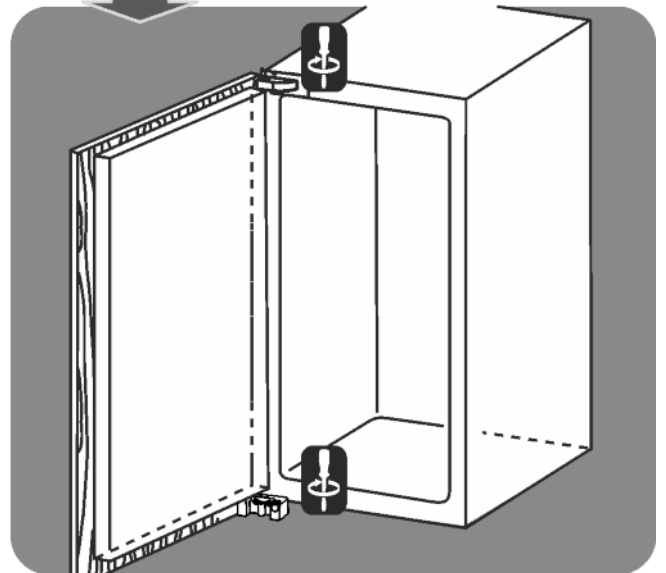
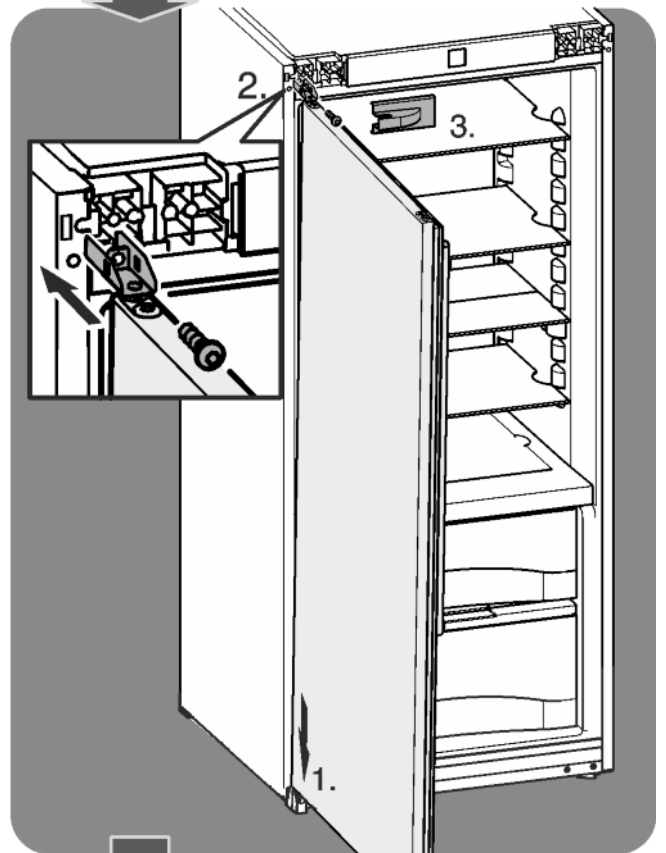
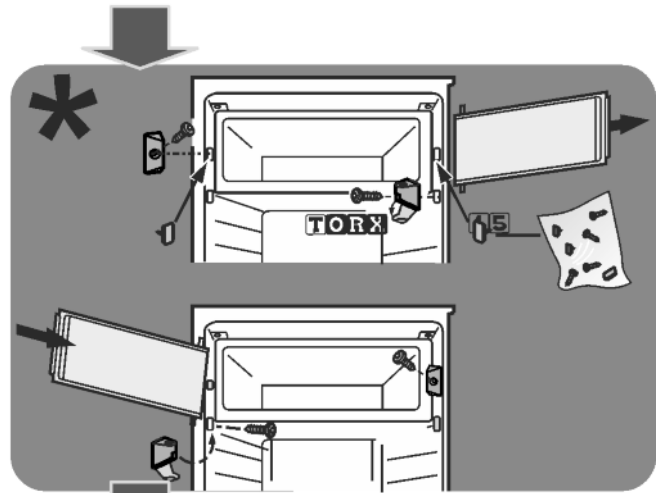
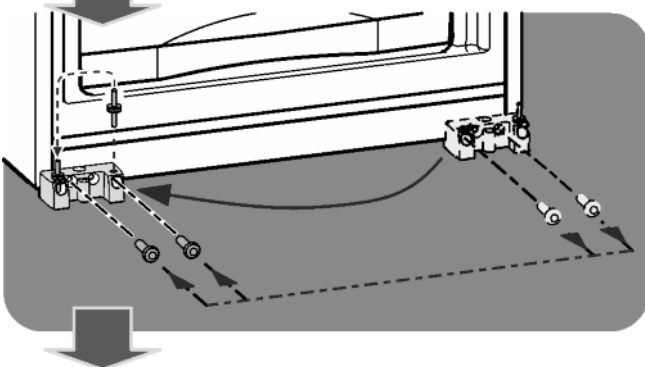
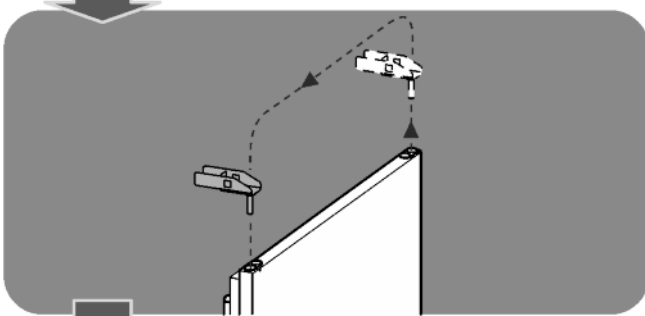
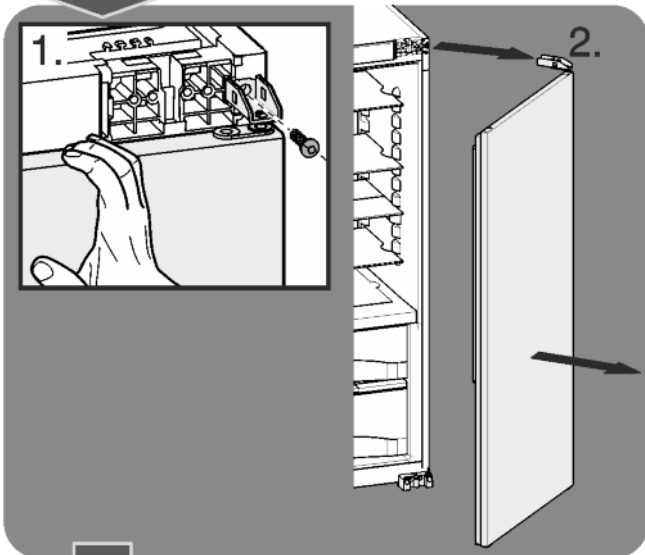
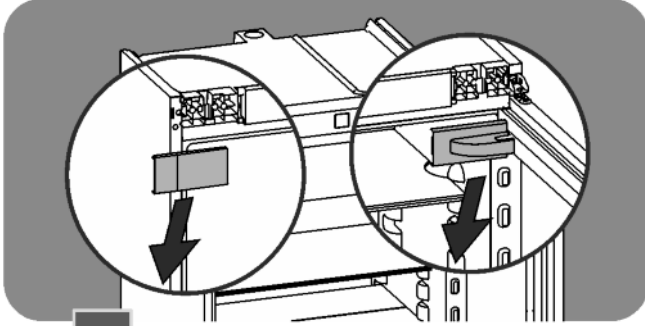
## Türanschlagwechsel

Changing over the door hinges

Cambio del tope de puerta

Inversion du sens d'ouverture de la porte

Перевешивание дверей



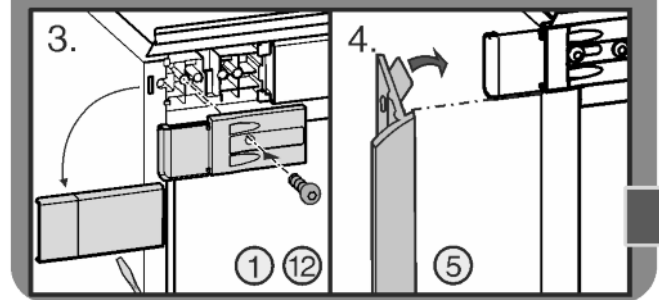
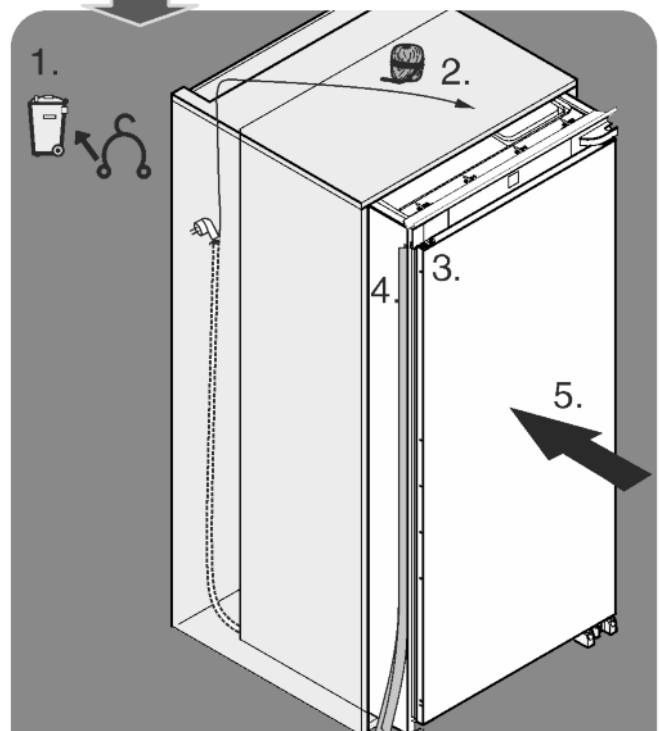
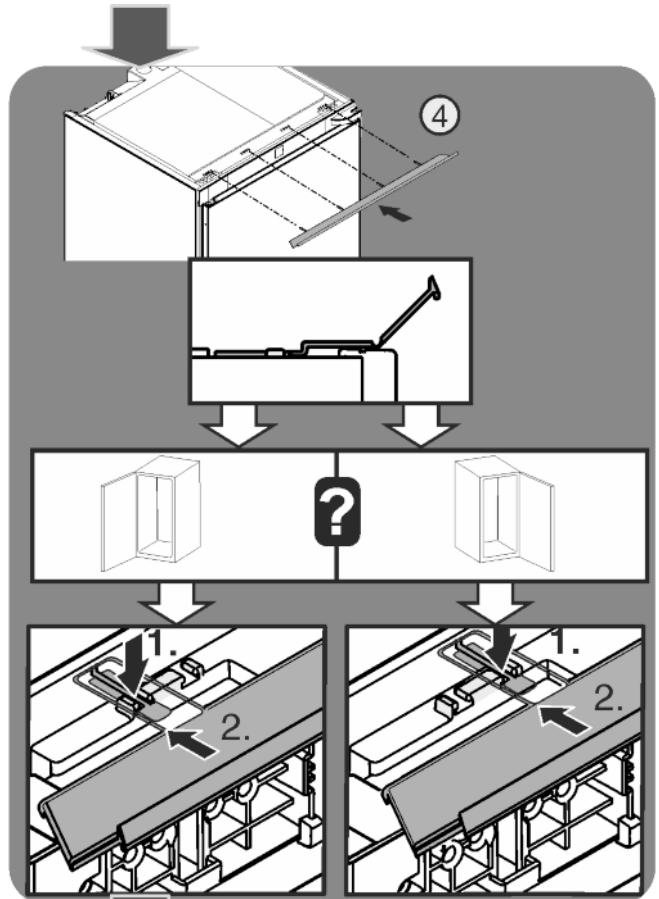
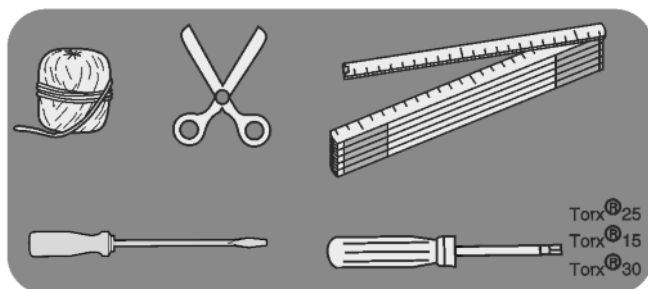
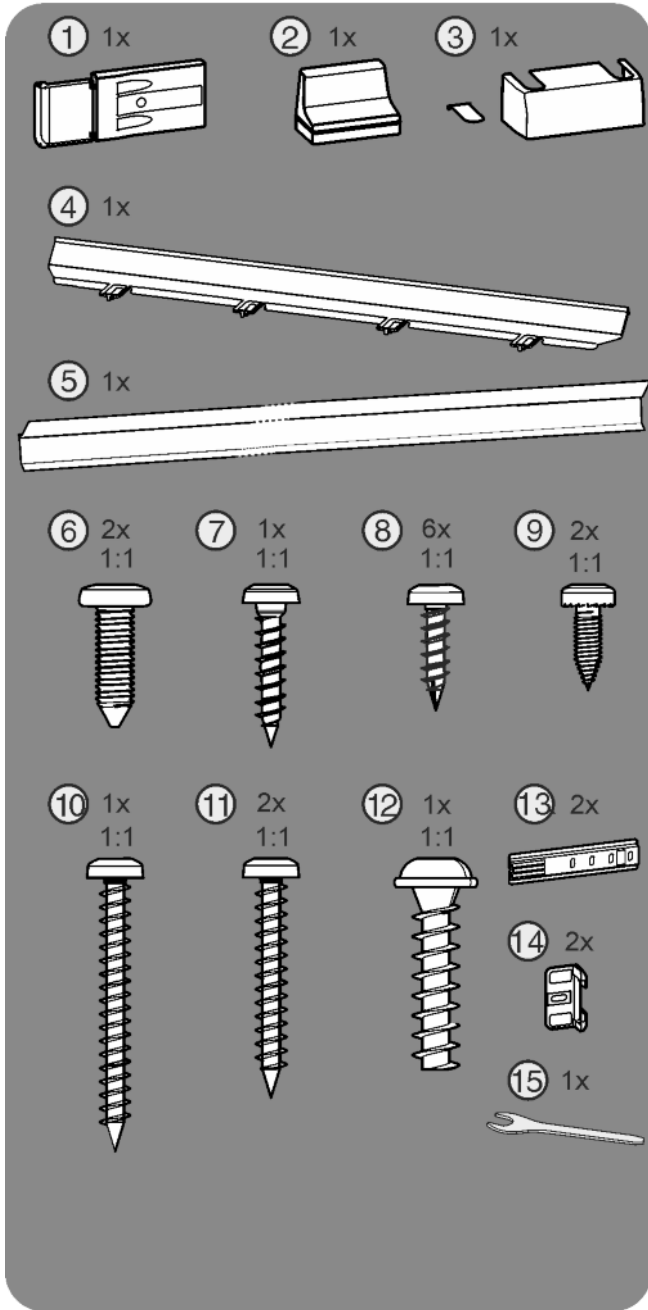
# Einbau in die Nische

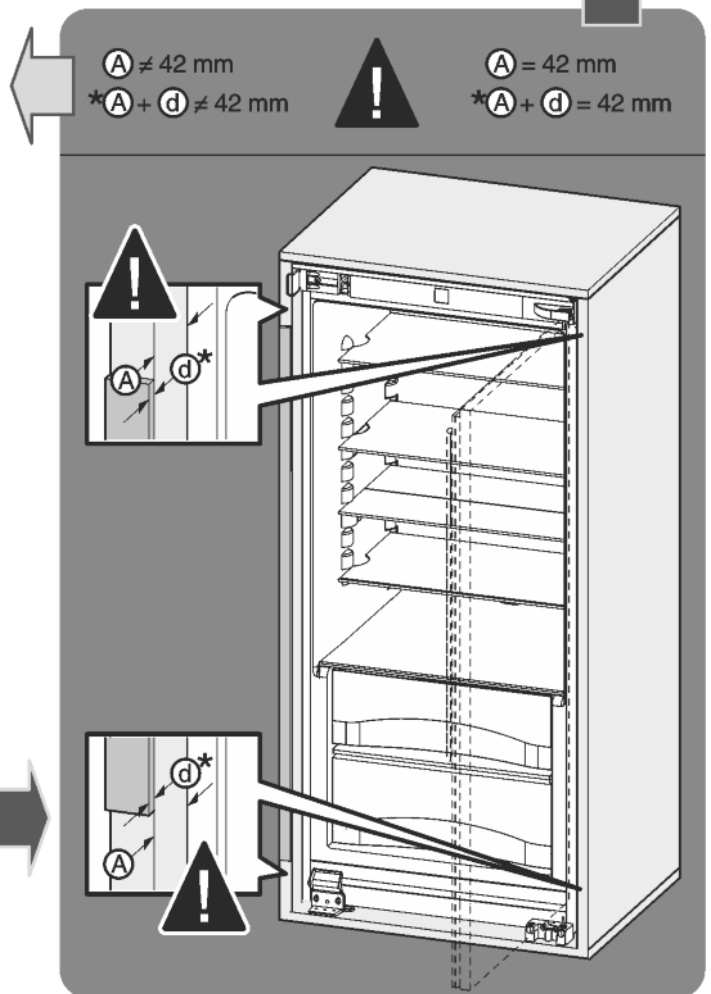
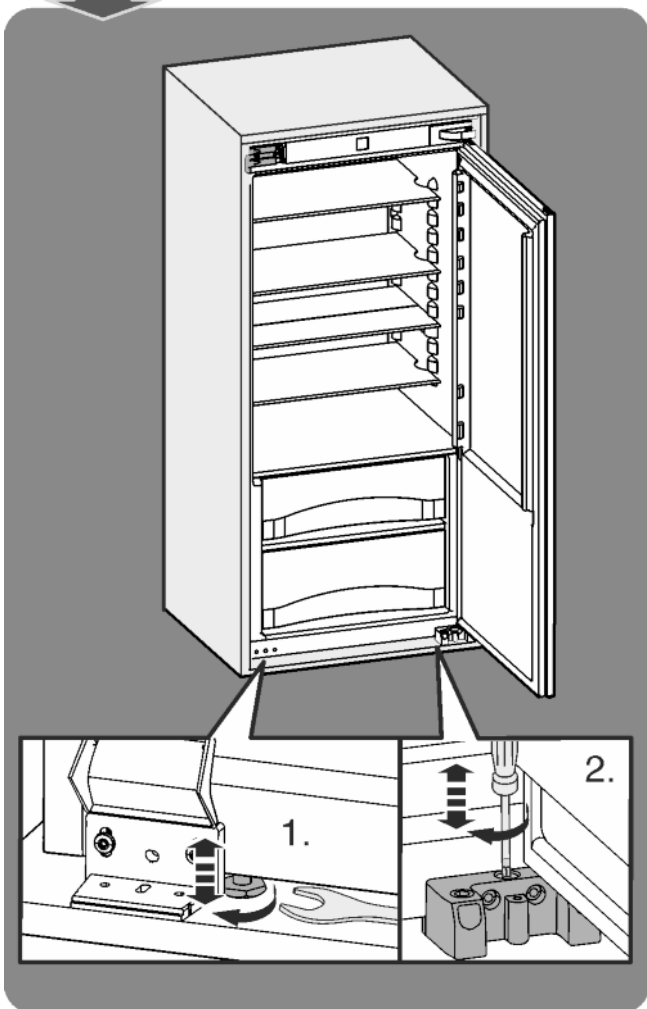
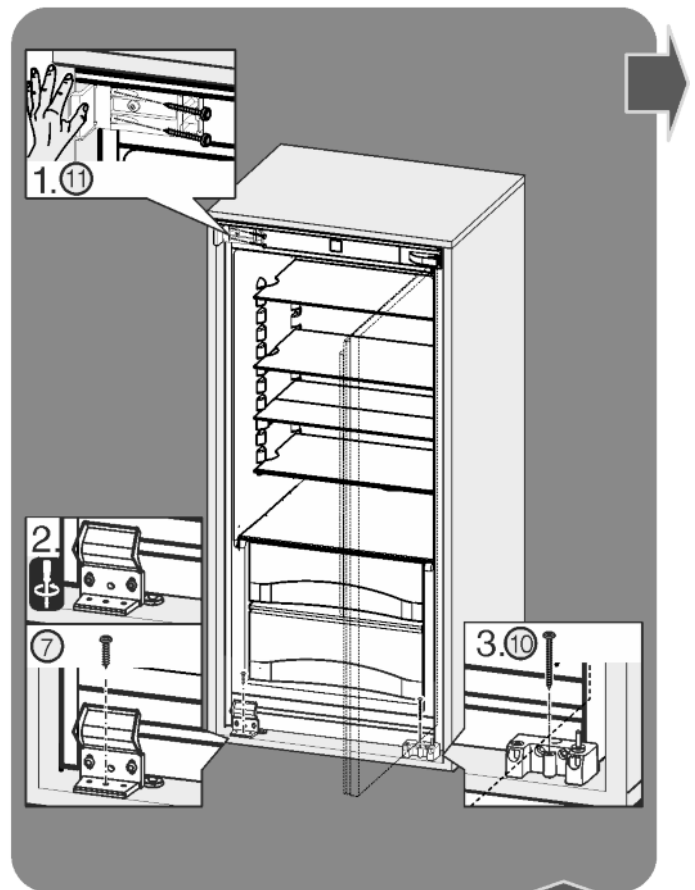
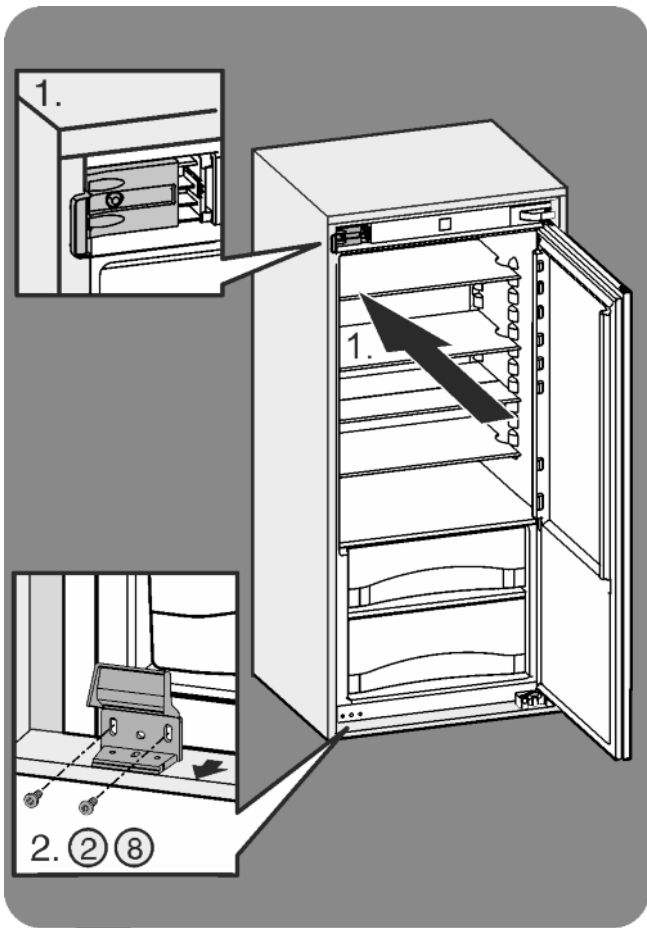
Installation

Montaje

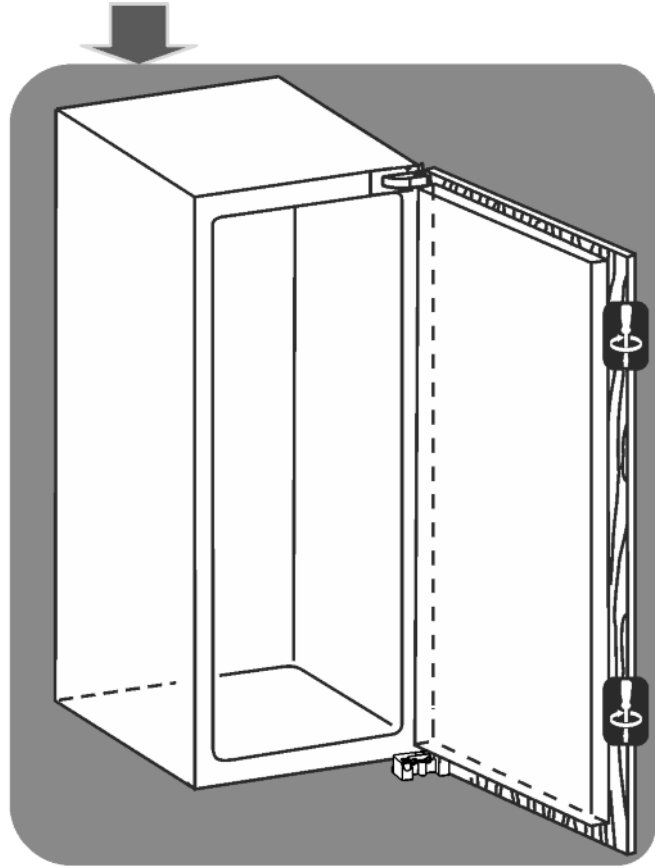
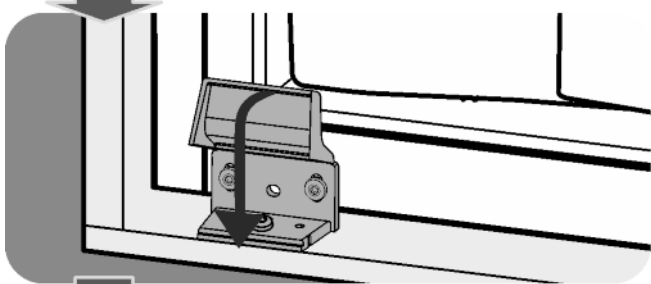
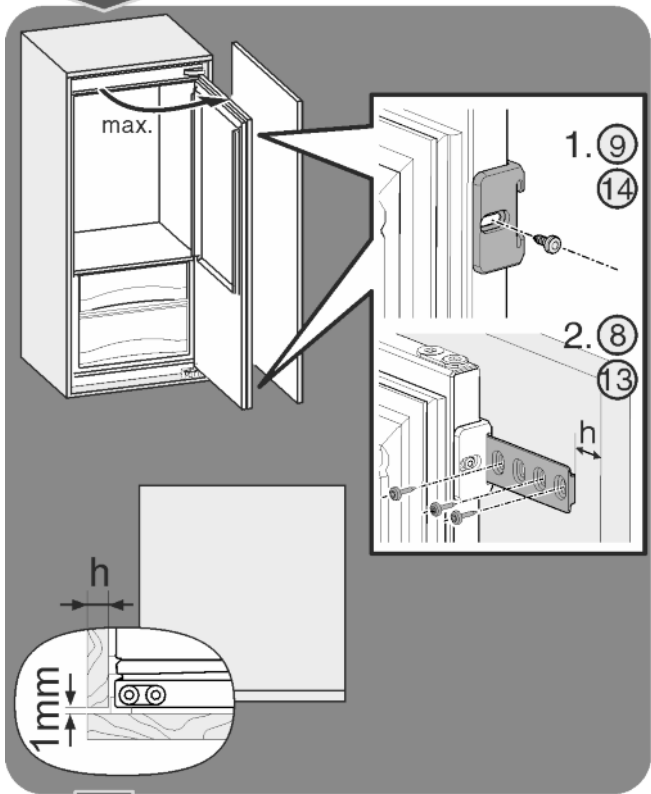
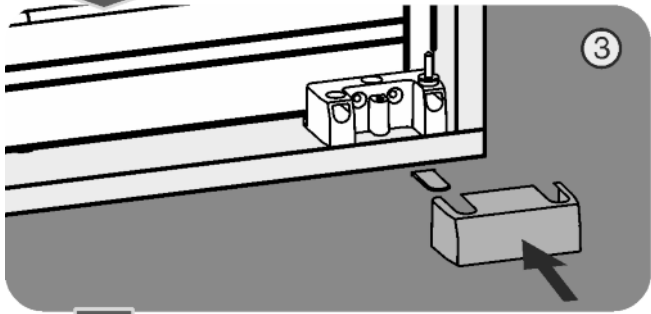
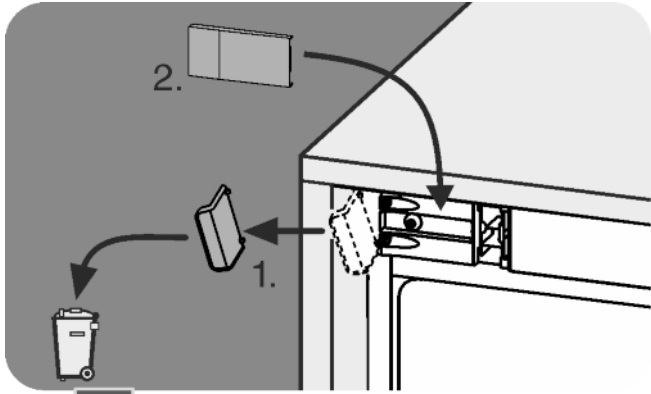
Montage

Установка











**Liebherr-Hausgeräte Ochsenhausen GmbH**

Memminger Straße 77-79

88416 Ochsenhausen

Deutschland

[home.liebherr.com](http://home.liebherr.com)